

GALERIA DE IMAGENES

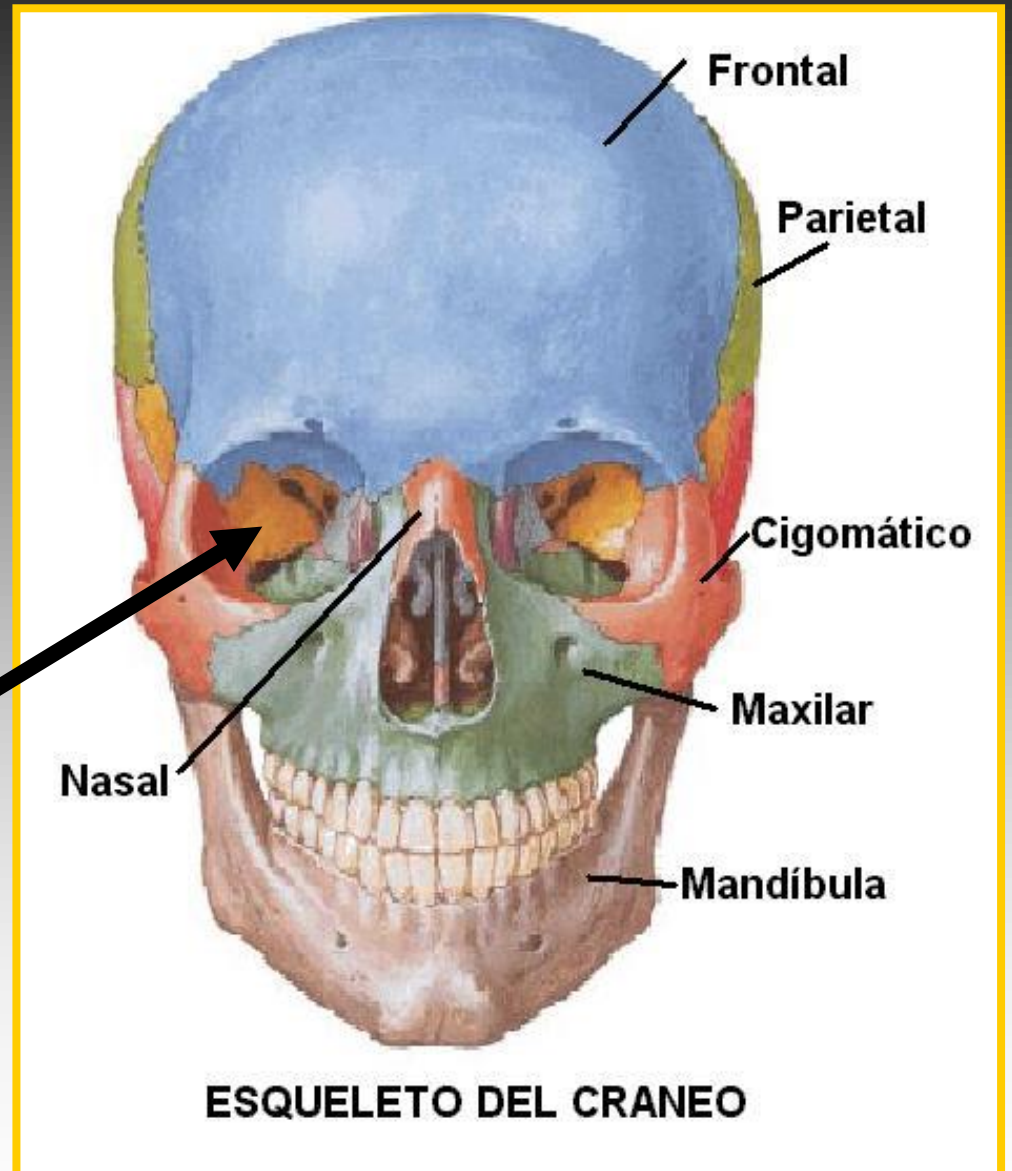
MORFOFISIOLOGIA DE LA VISION

Dra. CM.Melba Márquez Fernández

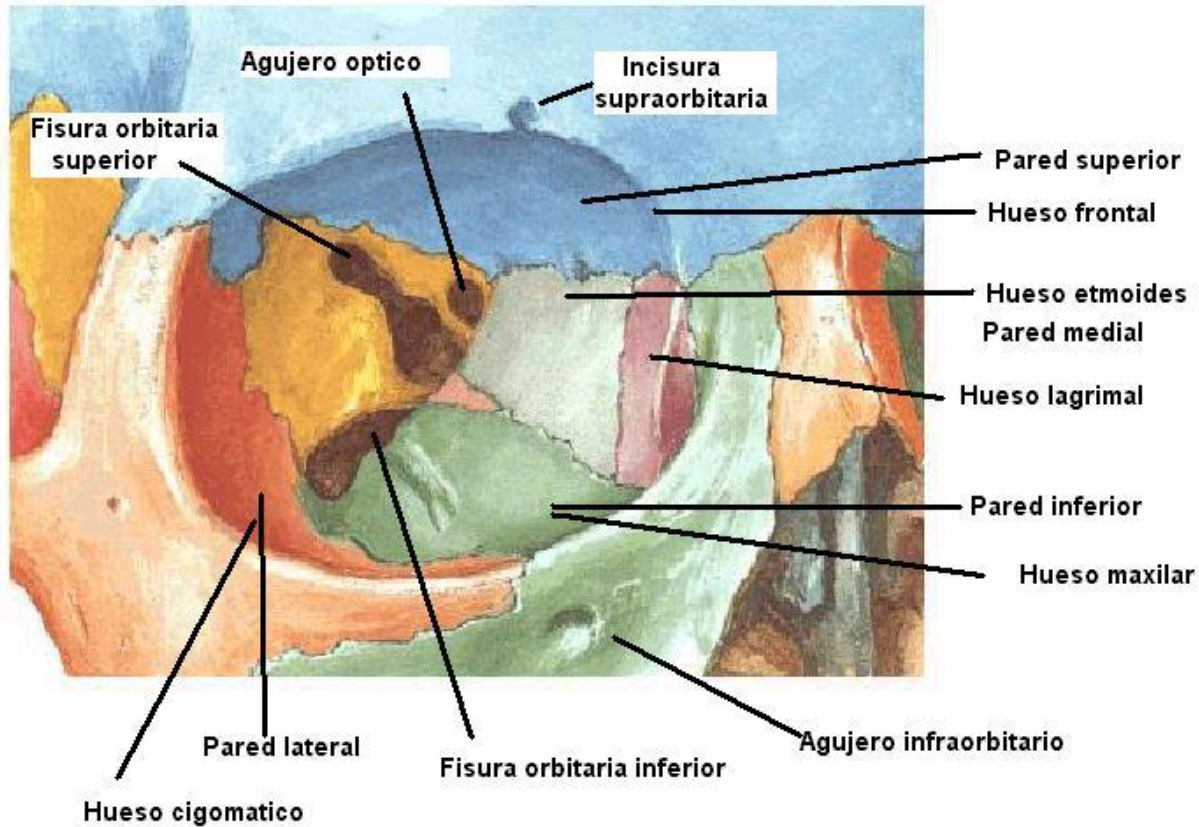


ANATOMIA DEL OJO

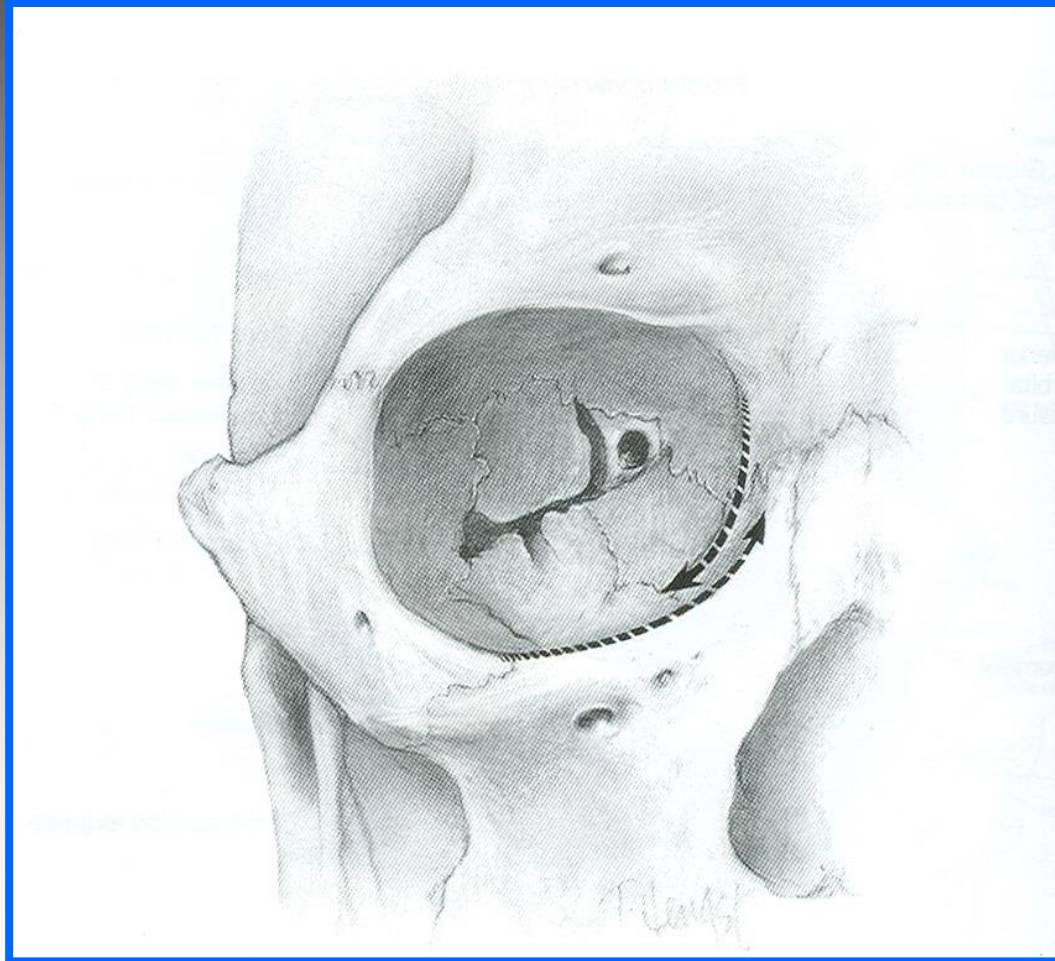
CAVIDAD
ORBITARIA
CAVIDAD ORBITARIA



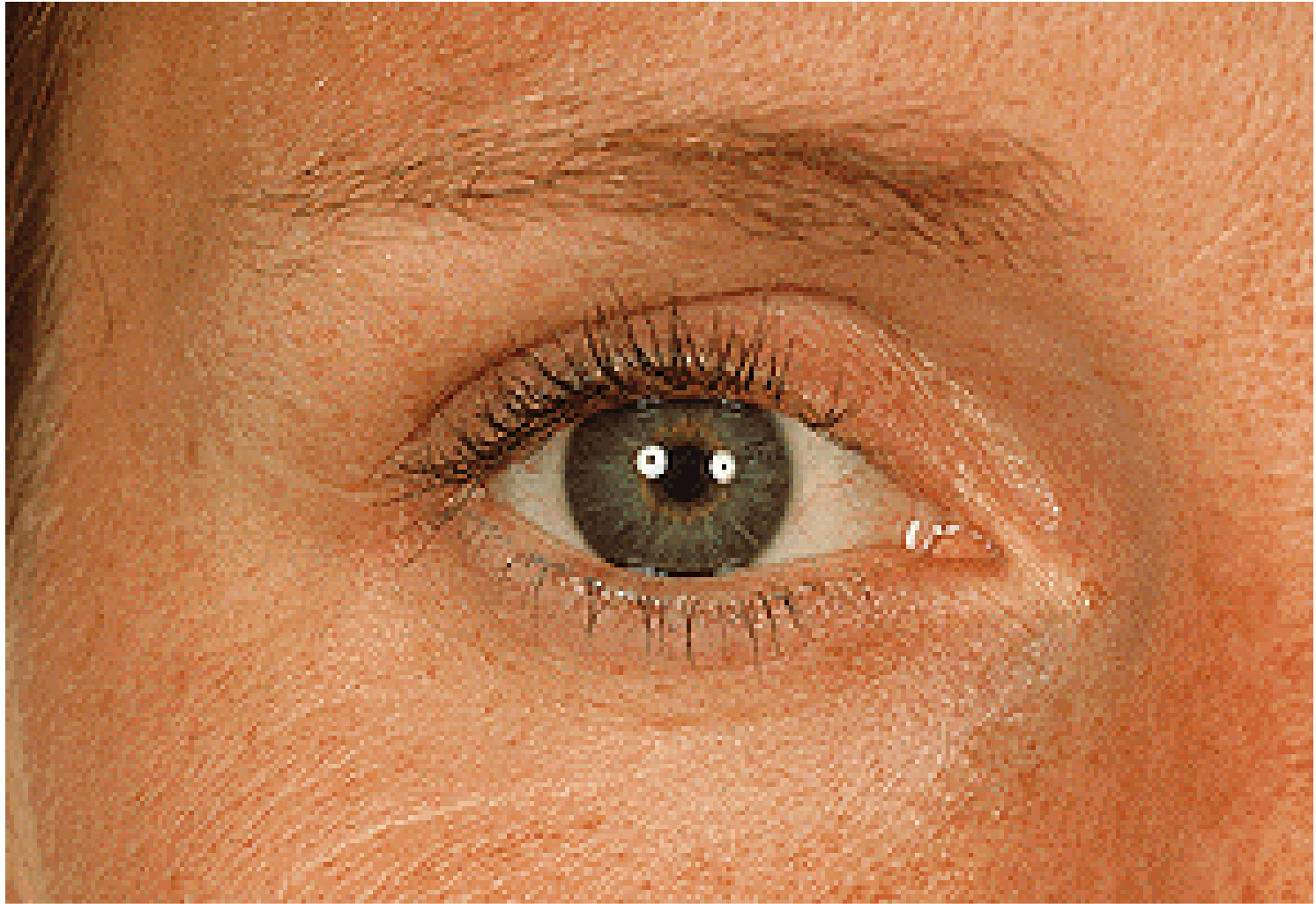
CAVIDAD ORBITARIA



REBORDE ORBITARIO Y AGUJEROS DEL VÉRTICE

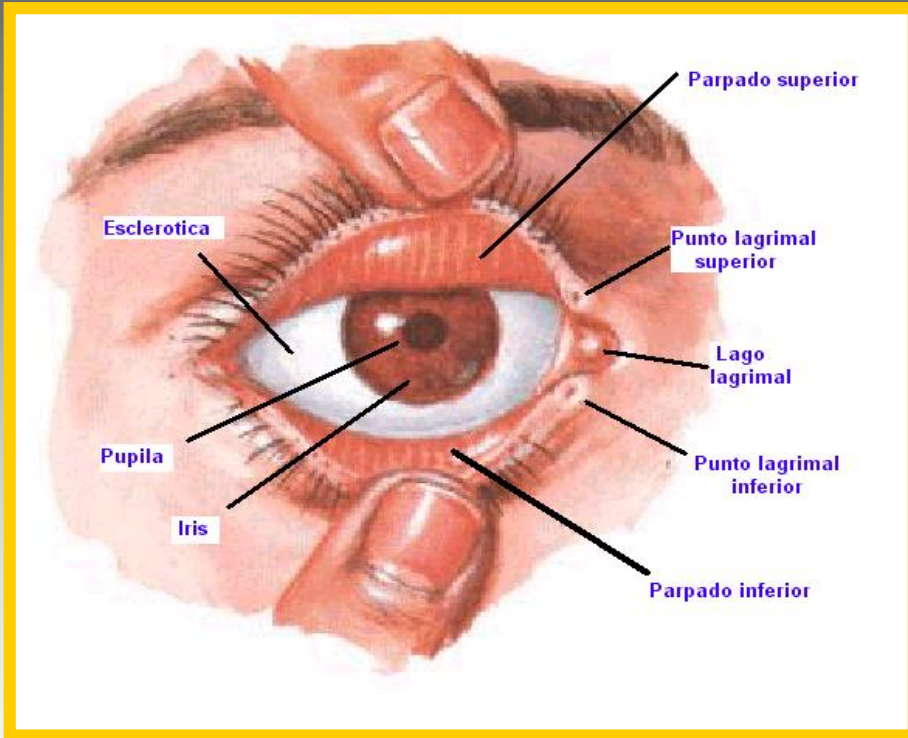


ANATOMIA DEL OJO

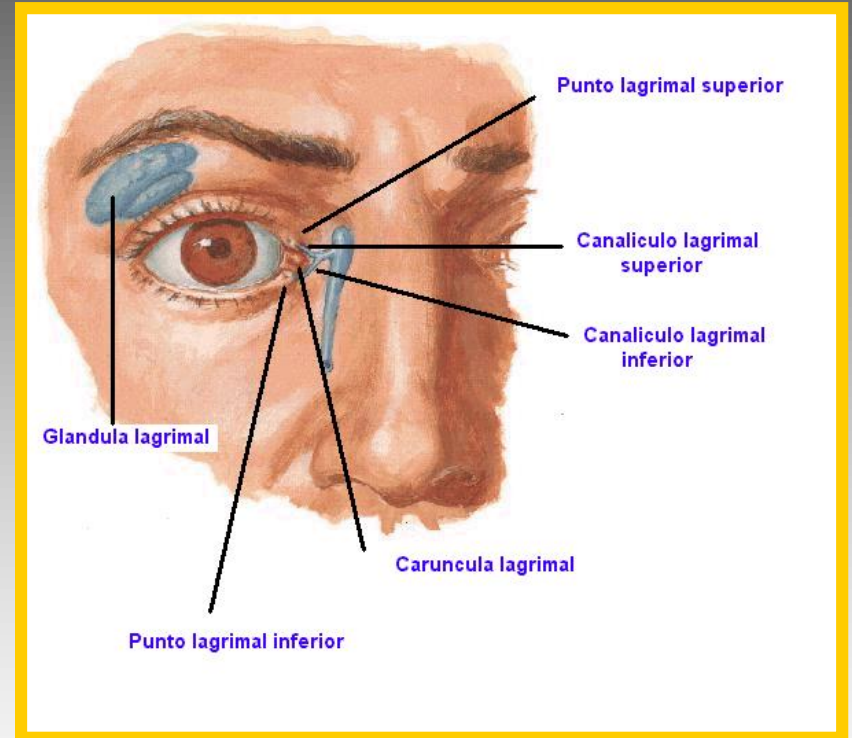


VISTA ANTERIOR DEL OJO DERECHO

ANATOMIA DEL OJO

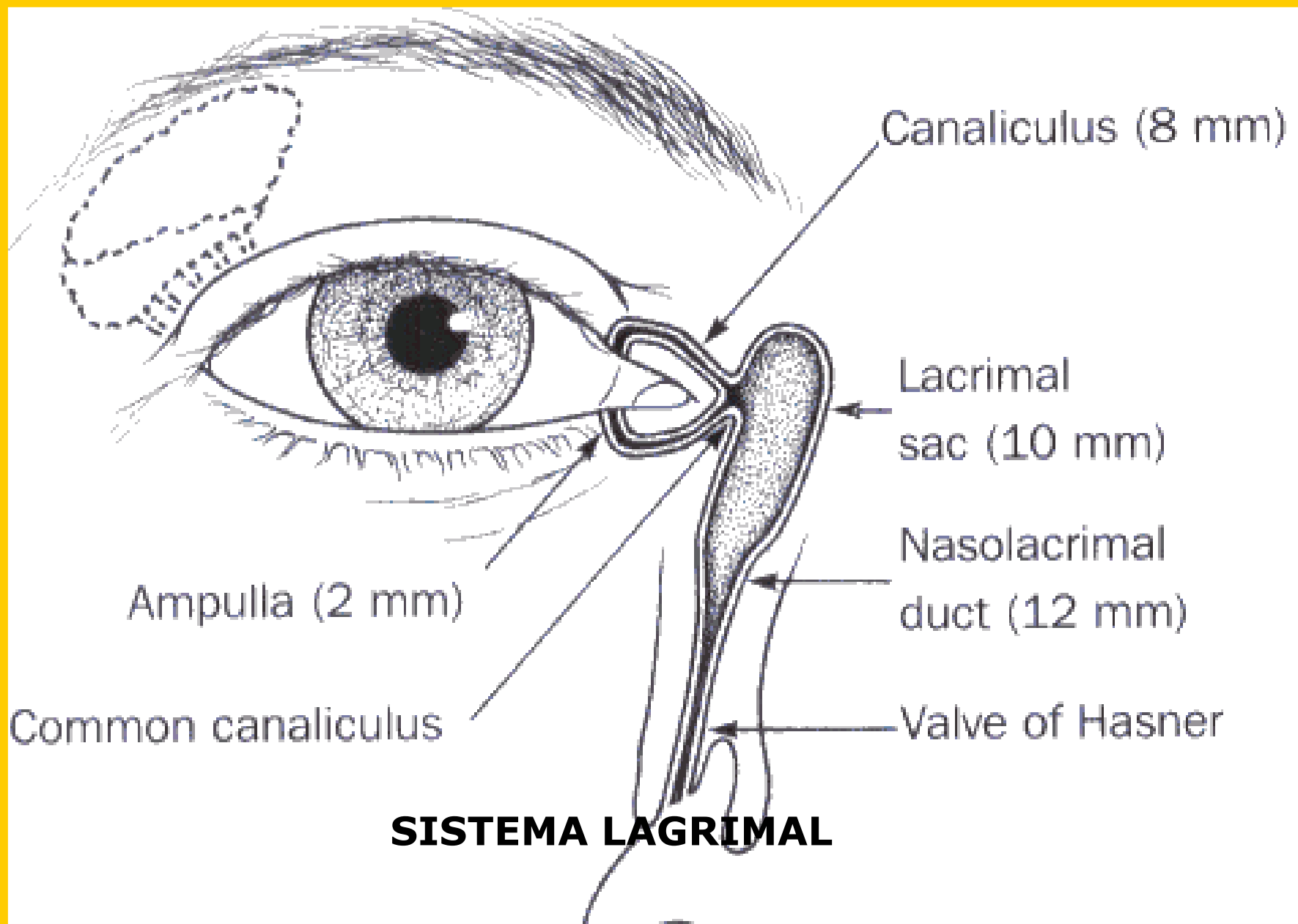


PÁRPADOS



APARATO LAGRIMAL

SISTEMA LAGRIMAL



SISTEMA LAGRIMAL

A

MECANISMO DE LA BOMBA LAGRIMAL



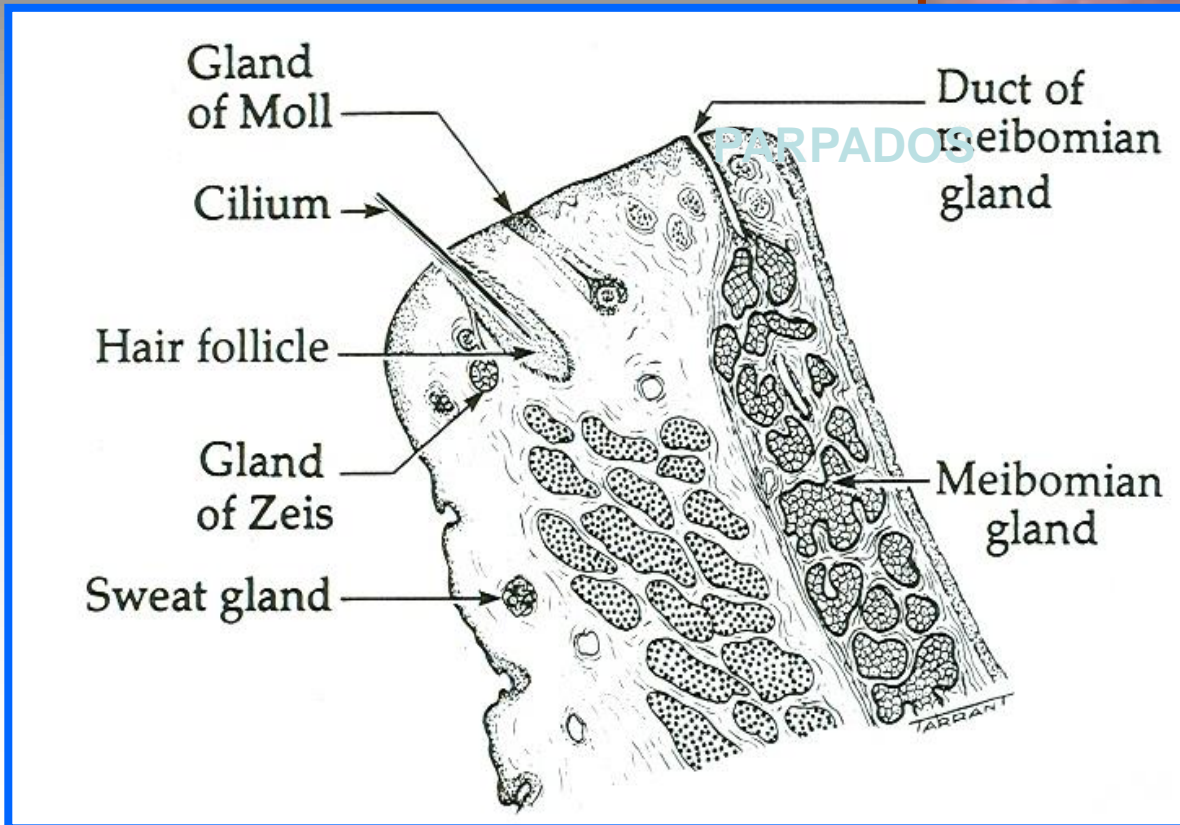
MECANISMO DE LA BOMBA LAGRIMAL

A) Succión capilar.

B) Llenado del saco.

C) Vaciamiento del saco.

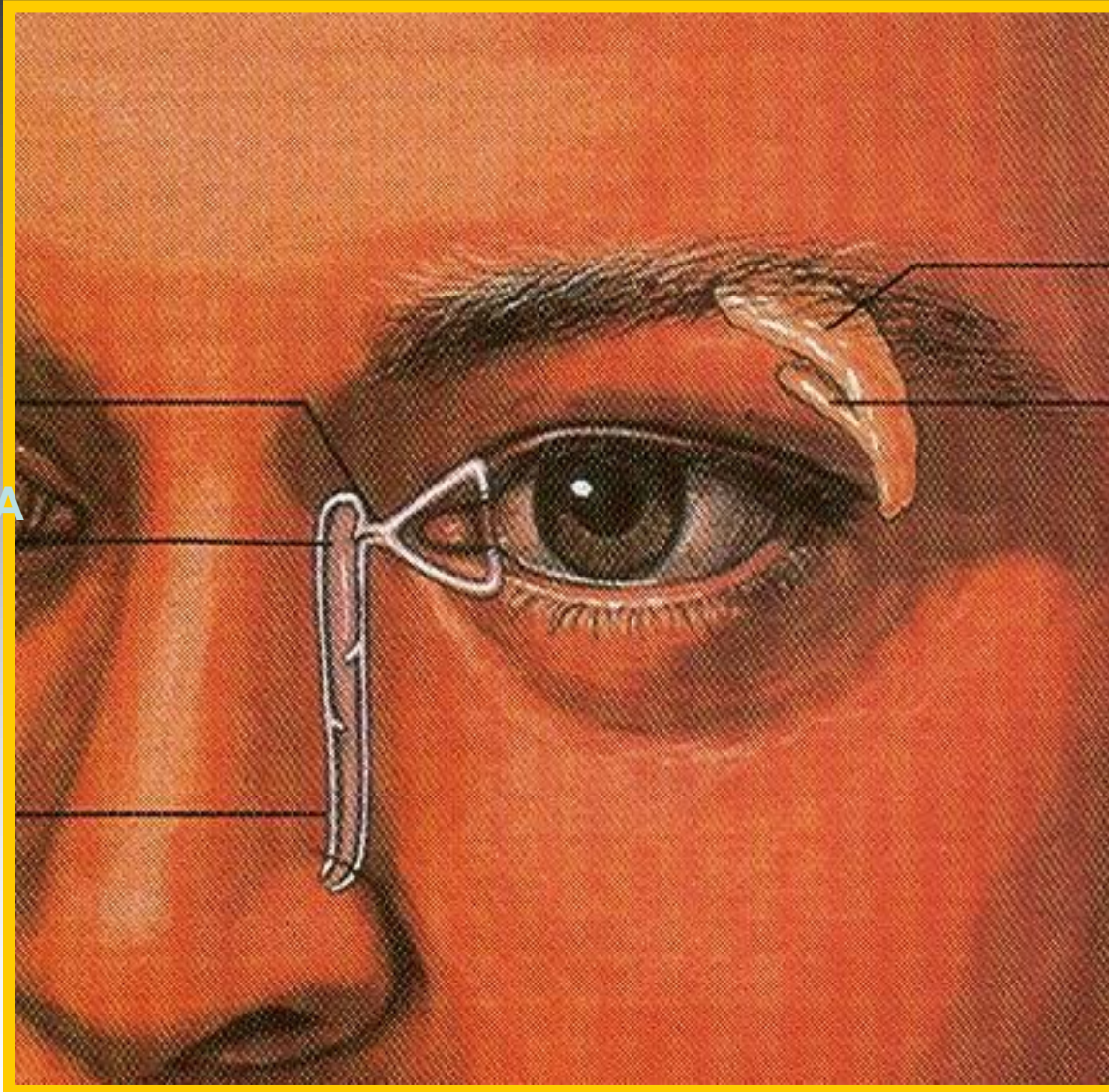
ANATOMIA DEL OJO



PARPADOS

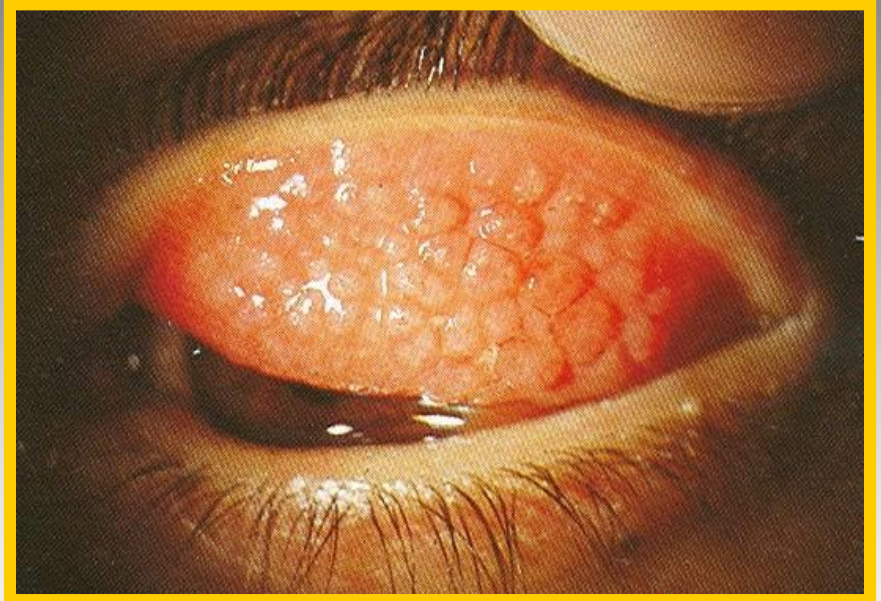
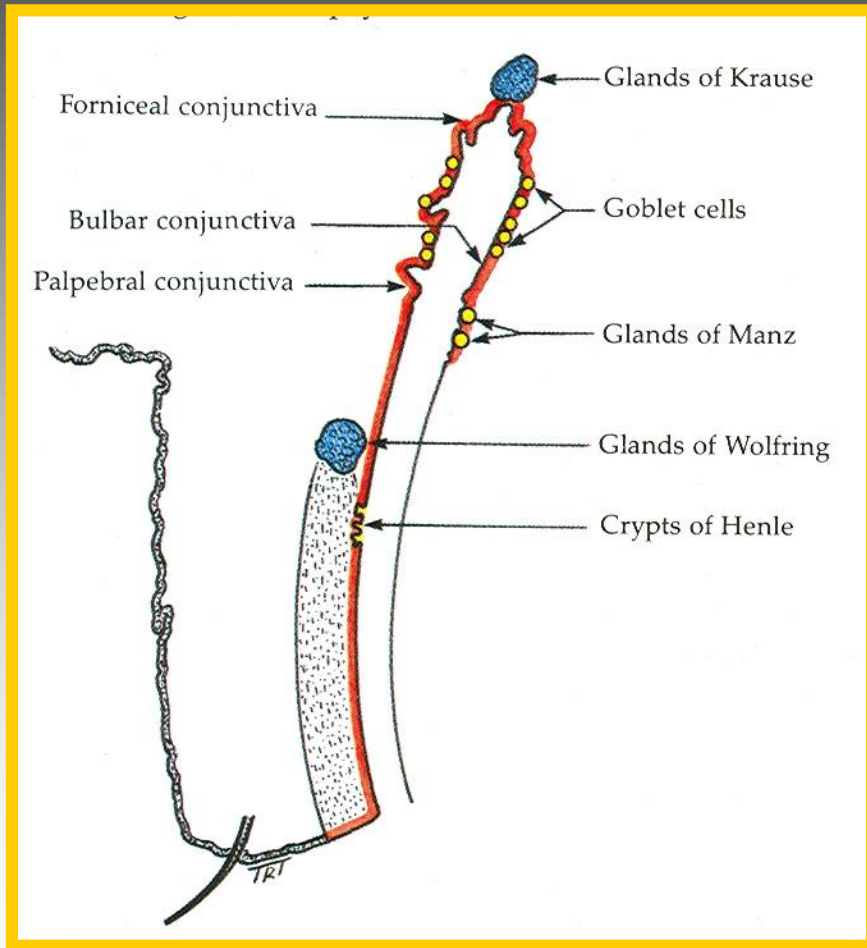
APARATO LAGRIMAL

PORCIÓN
EXCRETORA

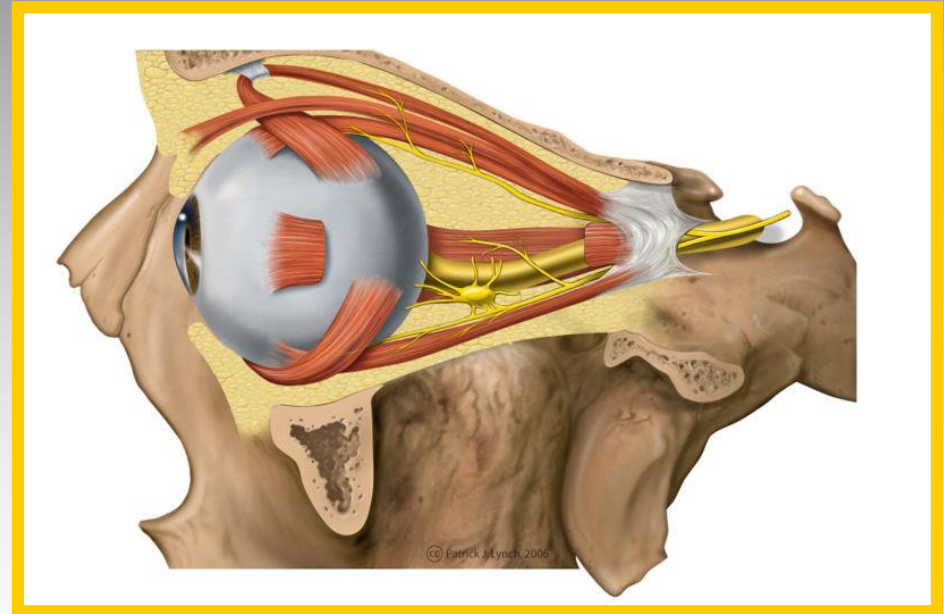
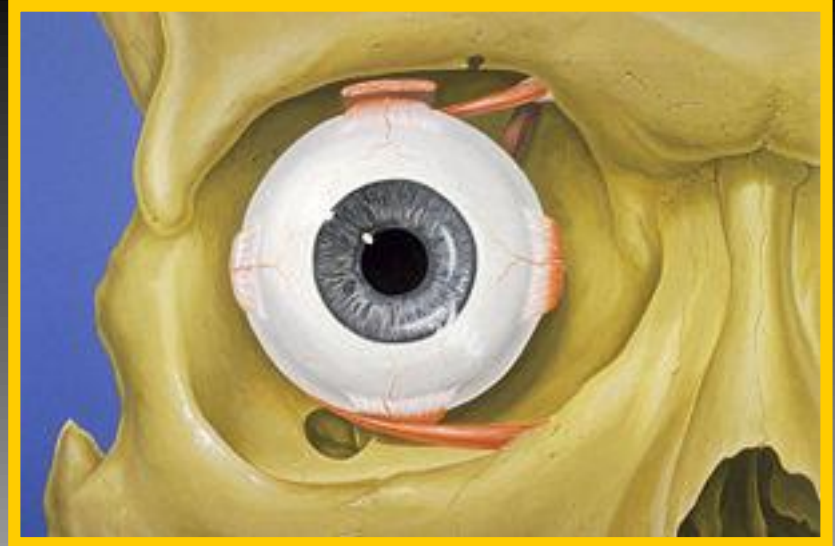
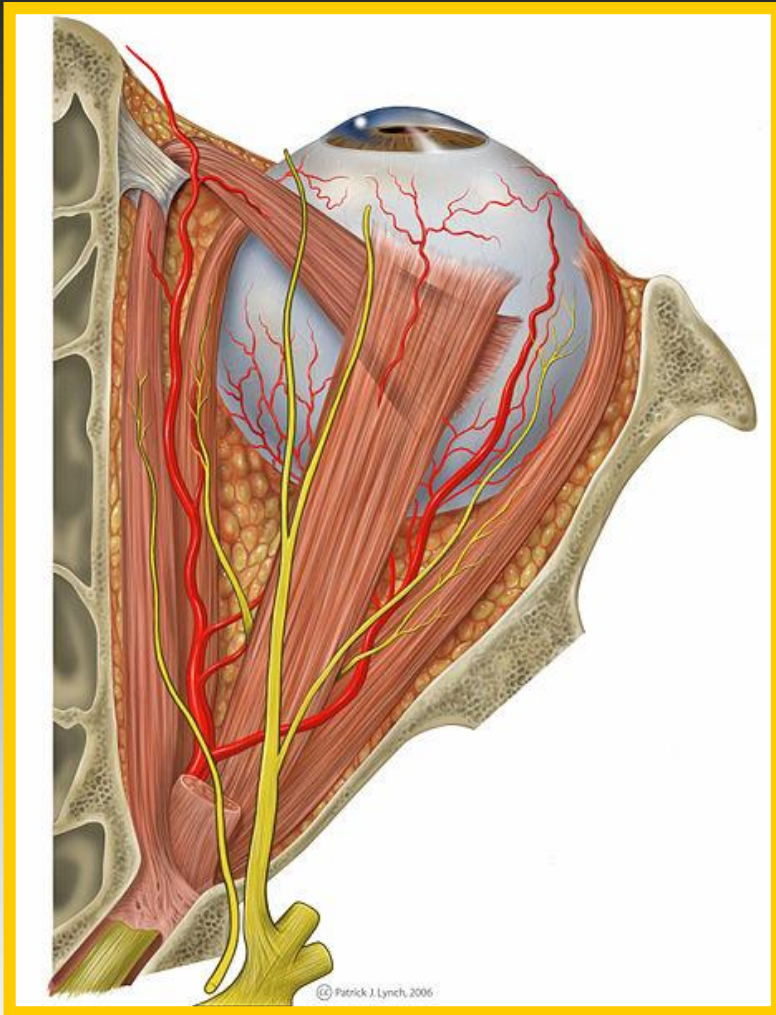


PORCIÓN
SECRETORA

ANATOMIA DEL OJO

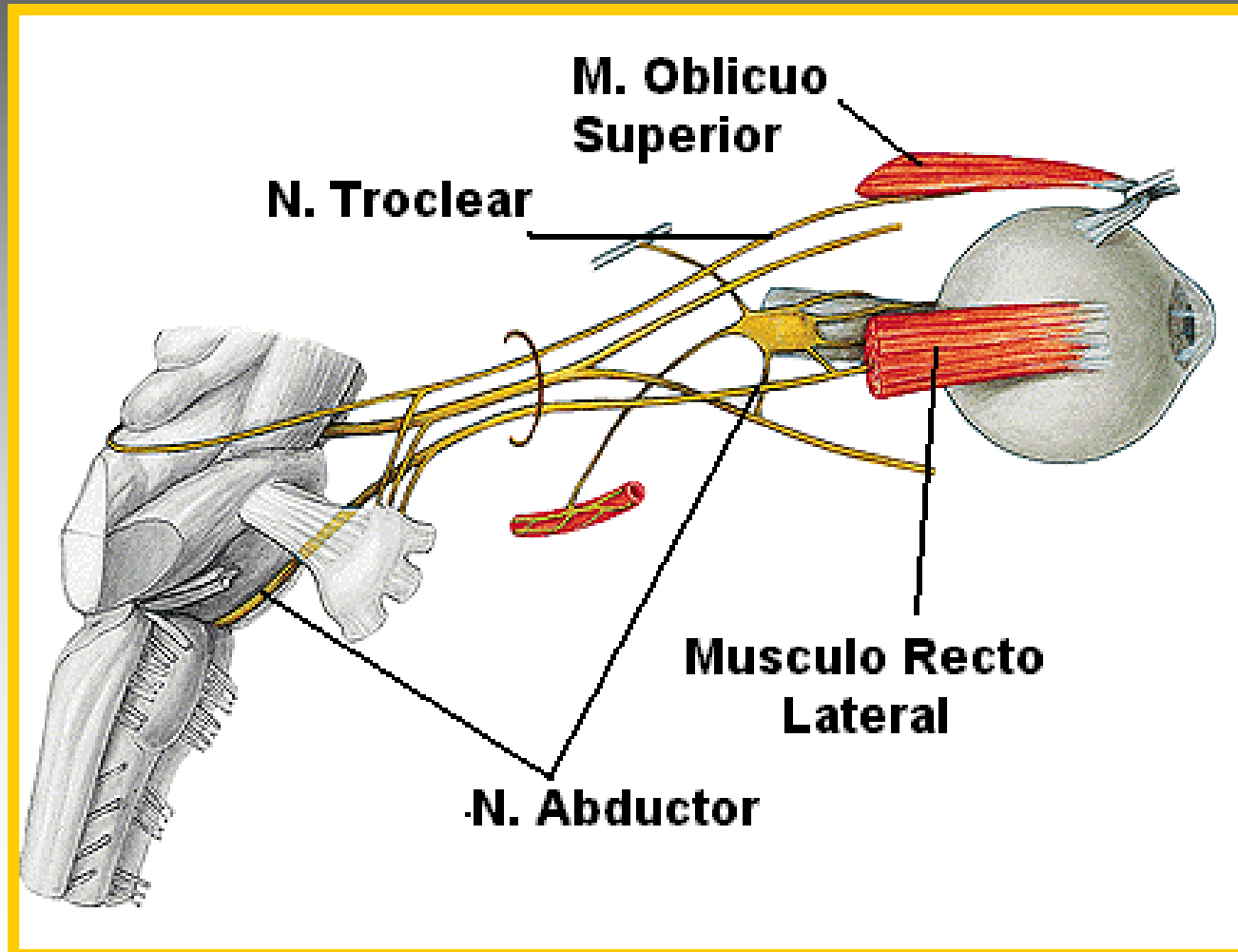


CONJUNTIVA



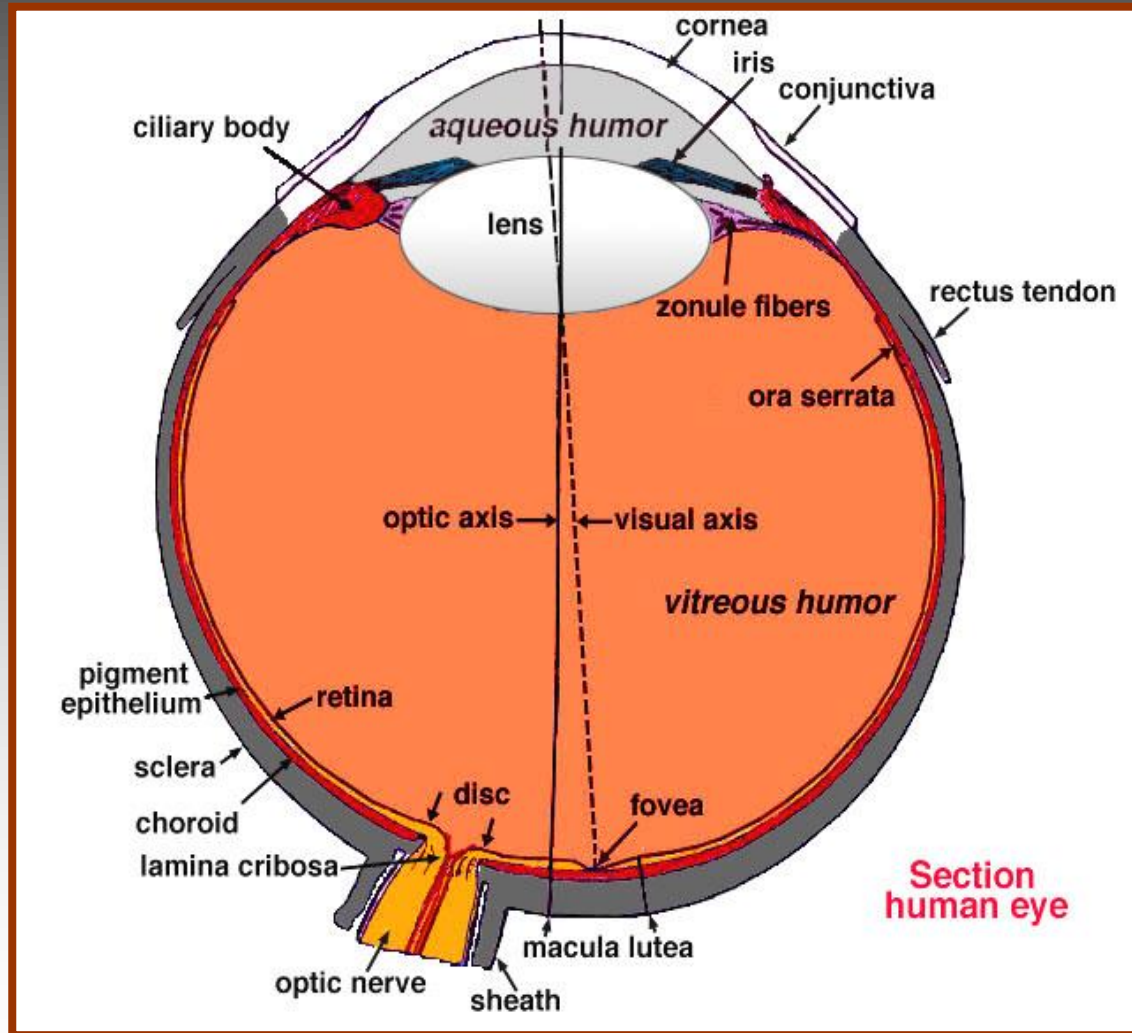
MÚSCULOS EXTRAOCULARES O EXTRINSECOS DEL OJO

INERVACION DE LOS MUSCULOS DEL OJO

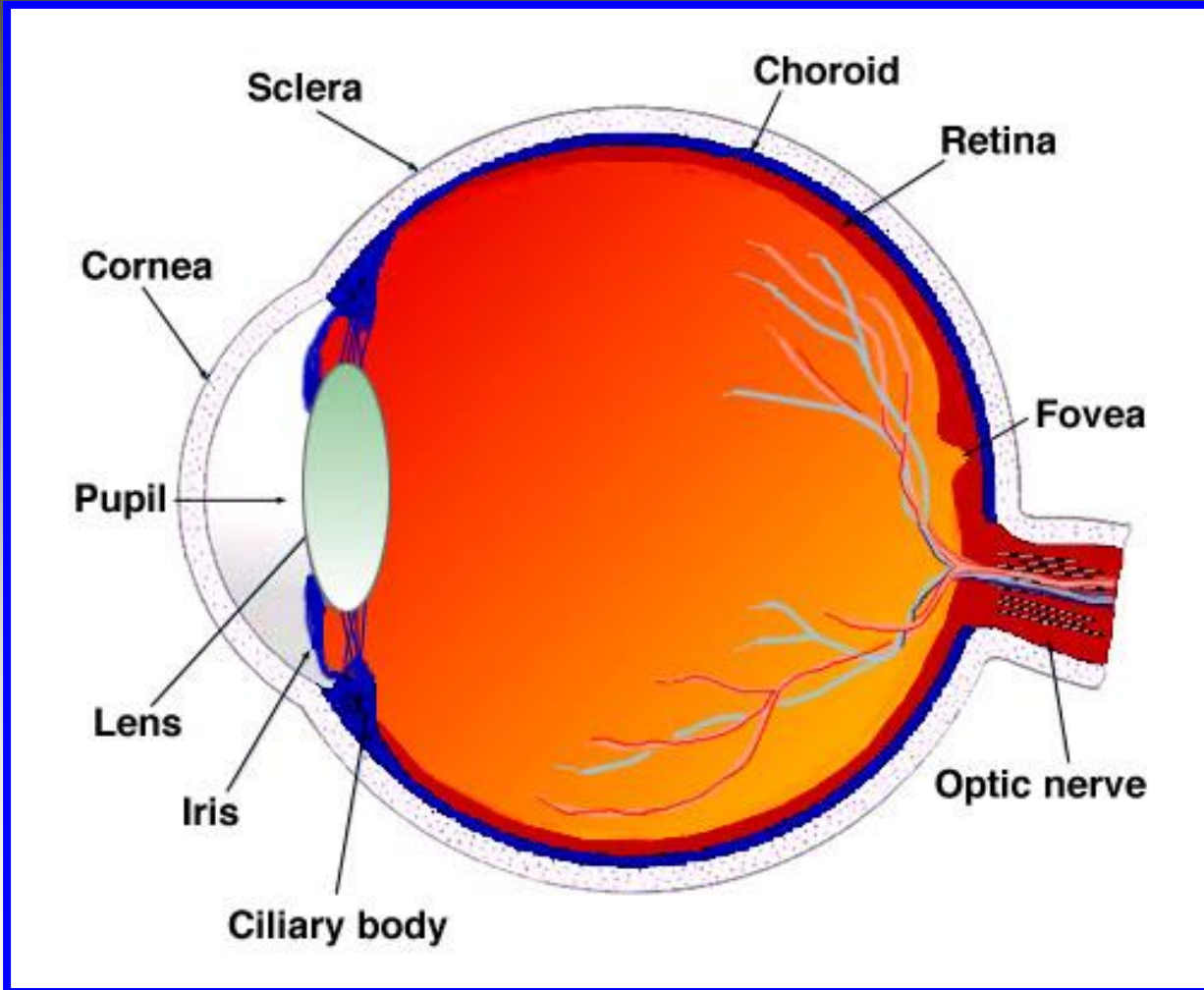


OJO NORMAL

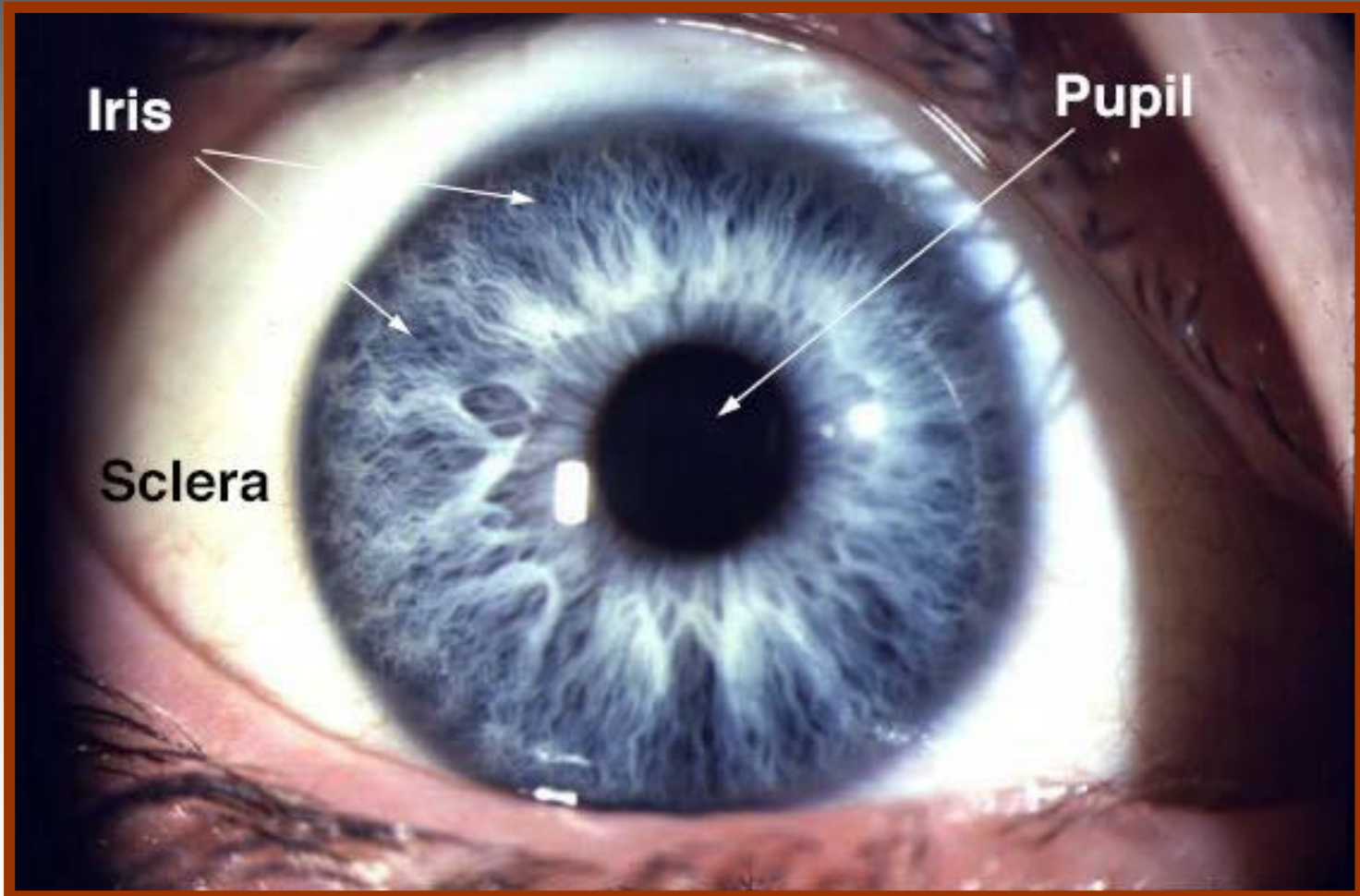
LONGITUD AXIL 23.4mm

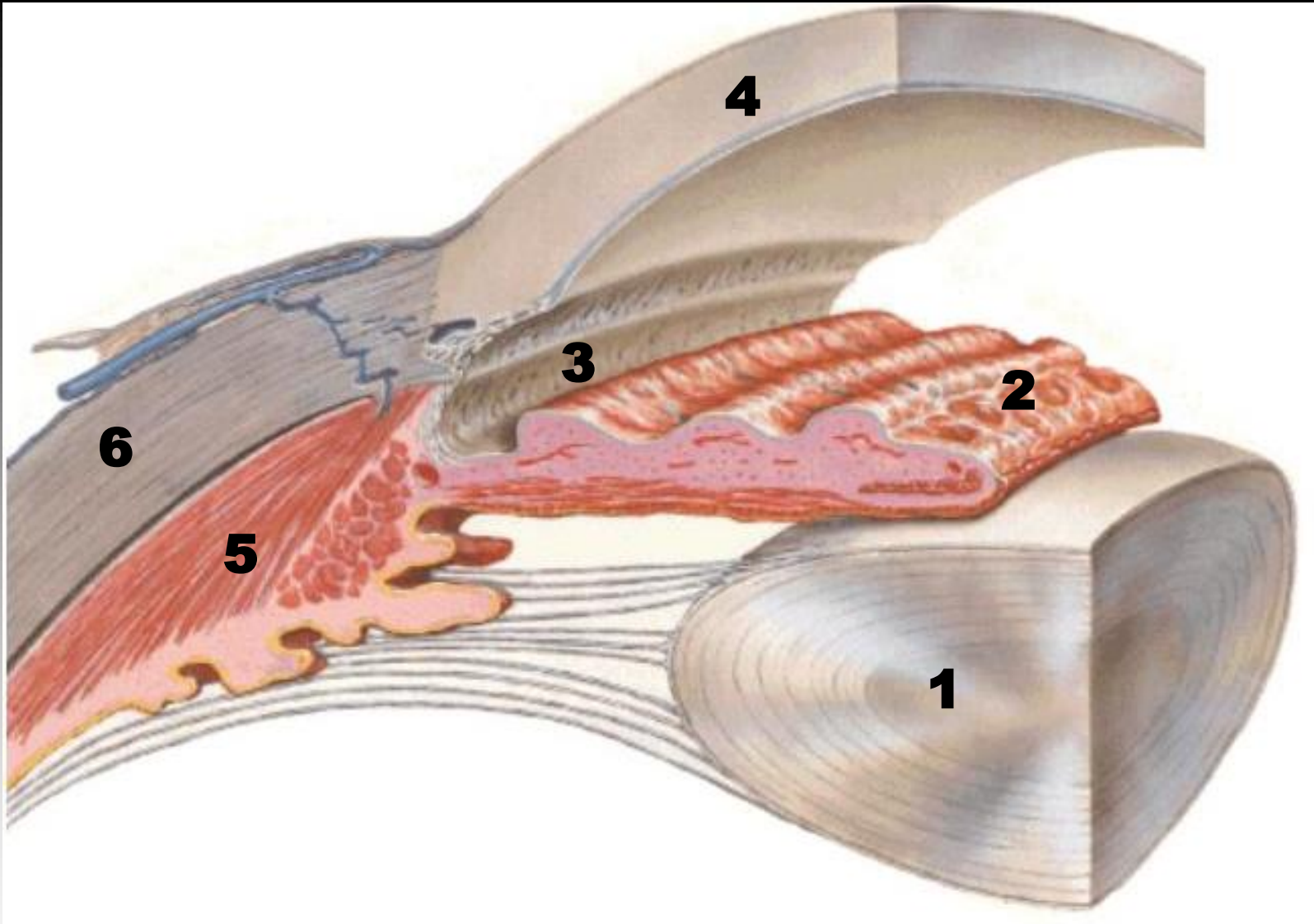


EL OJO. SUS ENVOLTURAS Y CONTENIDO



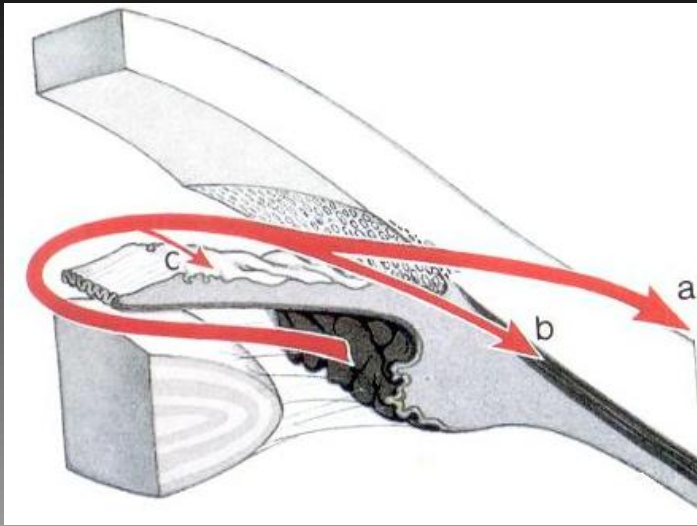
IRIS, PUPILA Y ESCLERA



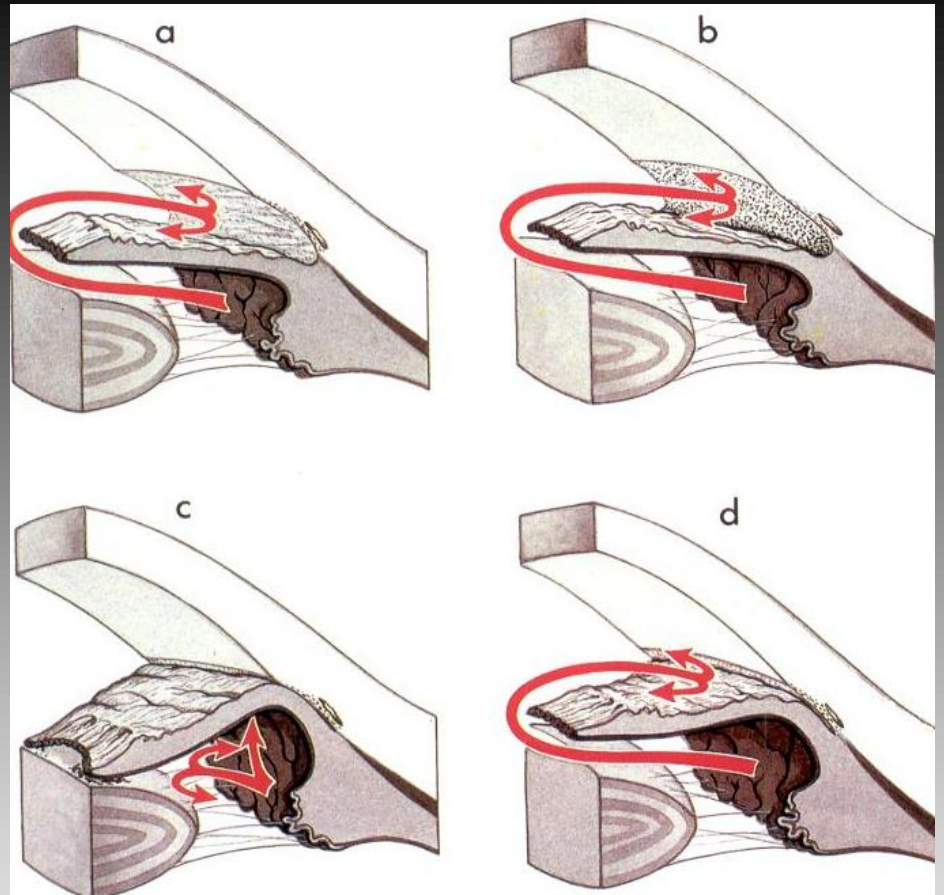


ESQUEMA DEL SEGEMNTO ANTERIOR

1) Cristalino, 2) Iris, 3) Angulo, 4) Córnea, 5) Cuerpo Ciliar, 6) Esclera.

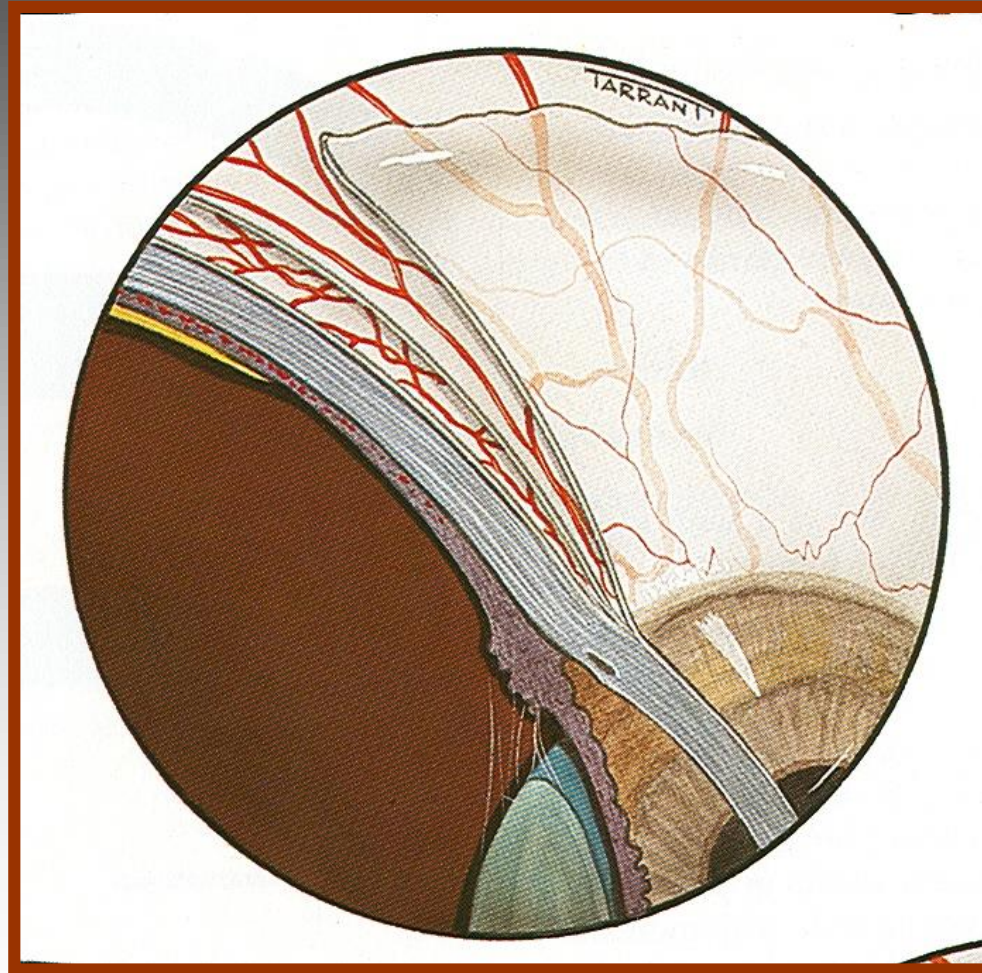


**CIRCULACION NORMAL
DEL ACUOSO**



**LA CIRCULACION BLOQUEADA
PROVOCANDO HIPERTENSION
OCULAR.**

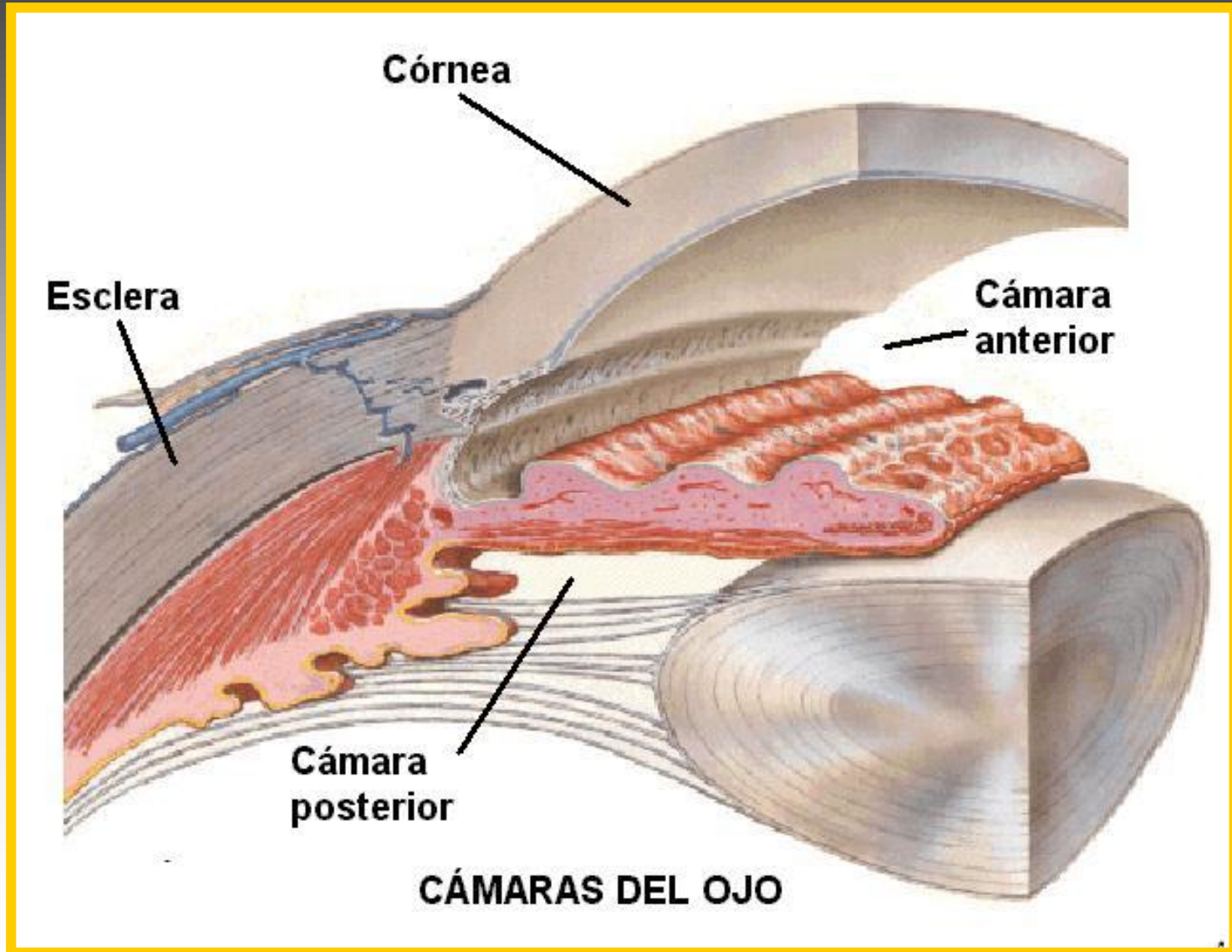
VASOS DE LA ESCLERA



SEGMENTO ANTERIOR



CÁMARAS DEL OJO



CAPAS DE LA CÓRNEA

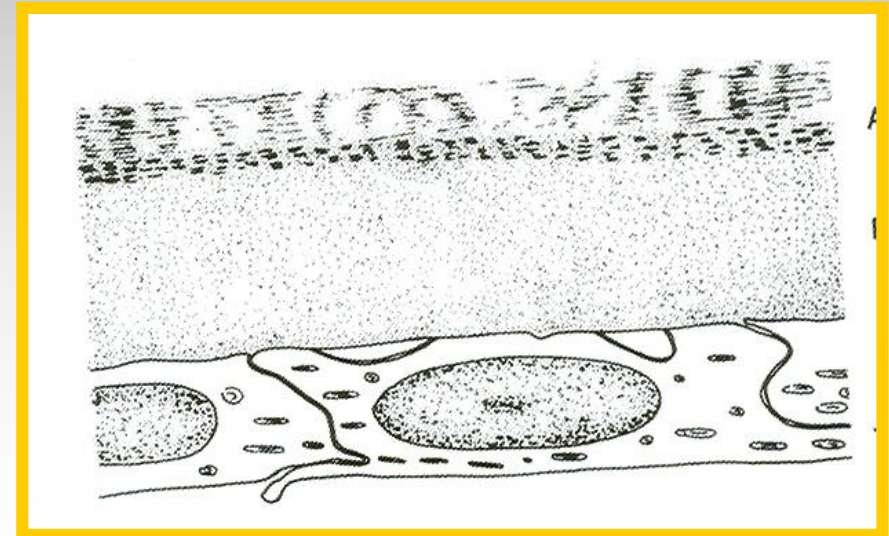
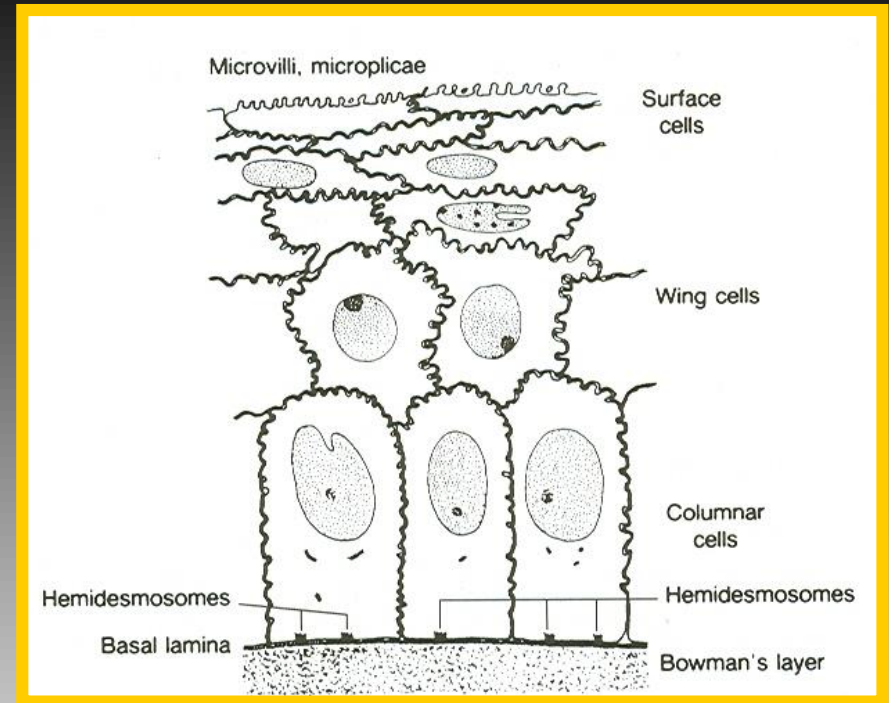
1. EPITELIO

2. CAPA DE BOWMAN

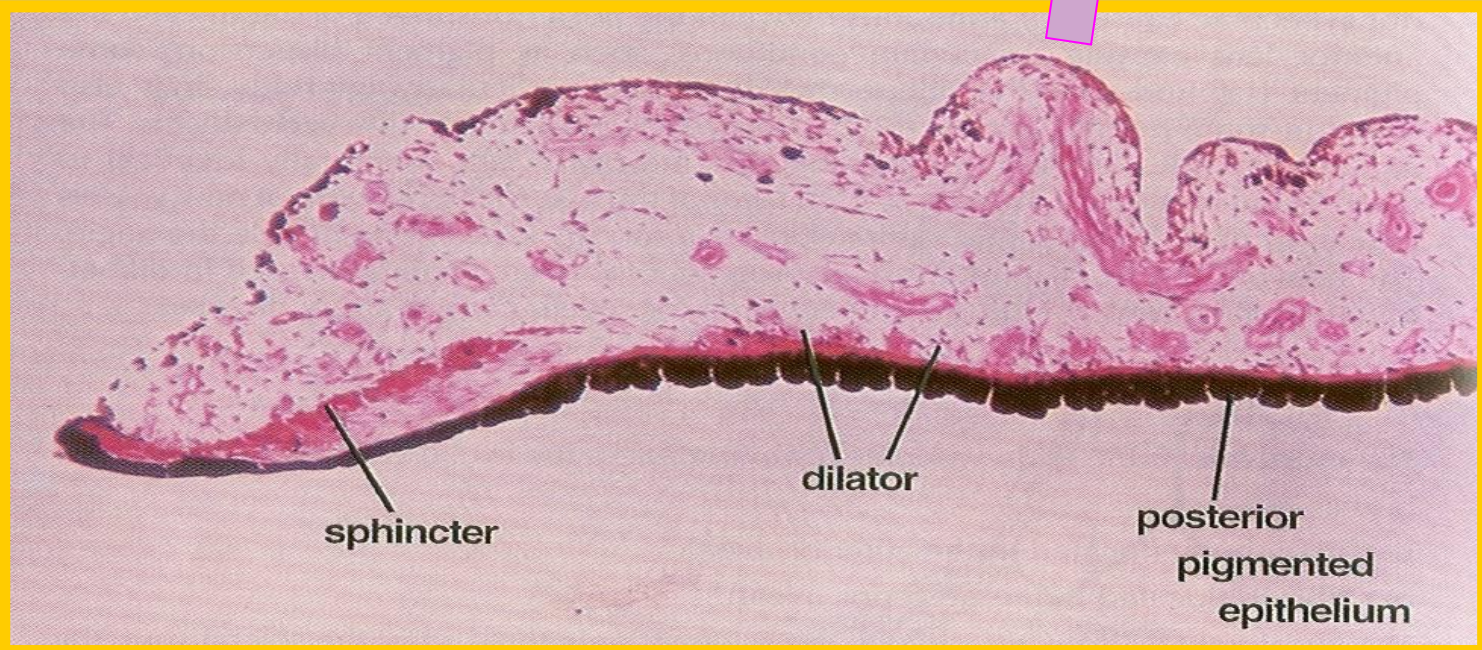
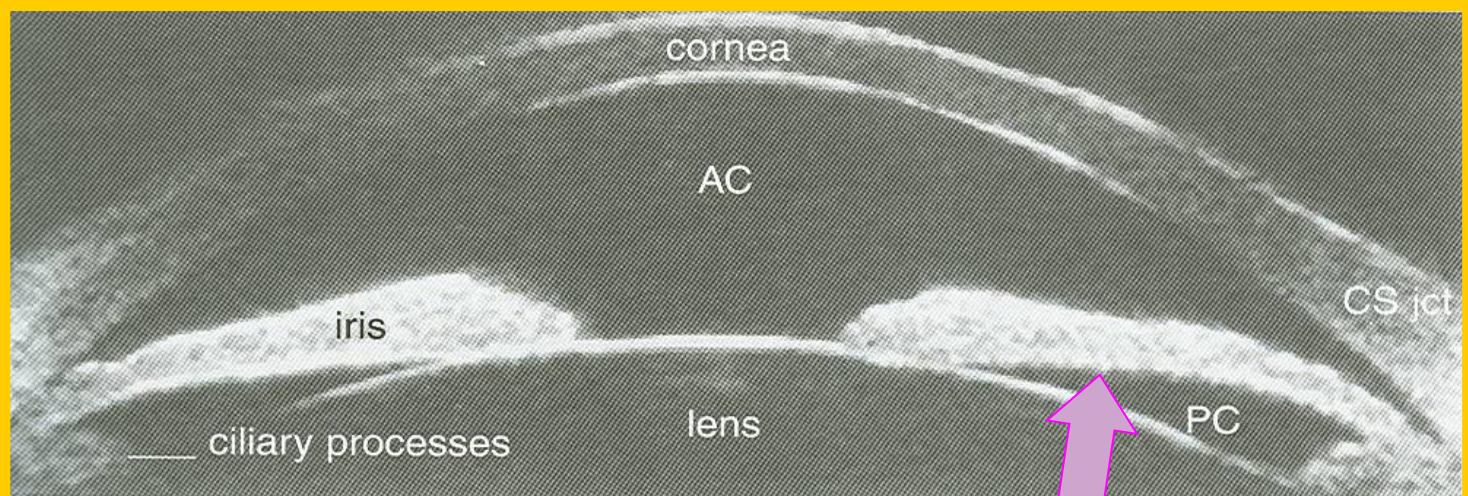
3. ESTROMA

4. MEMBRANA DESCEMENT

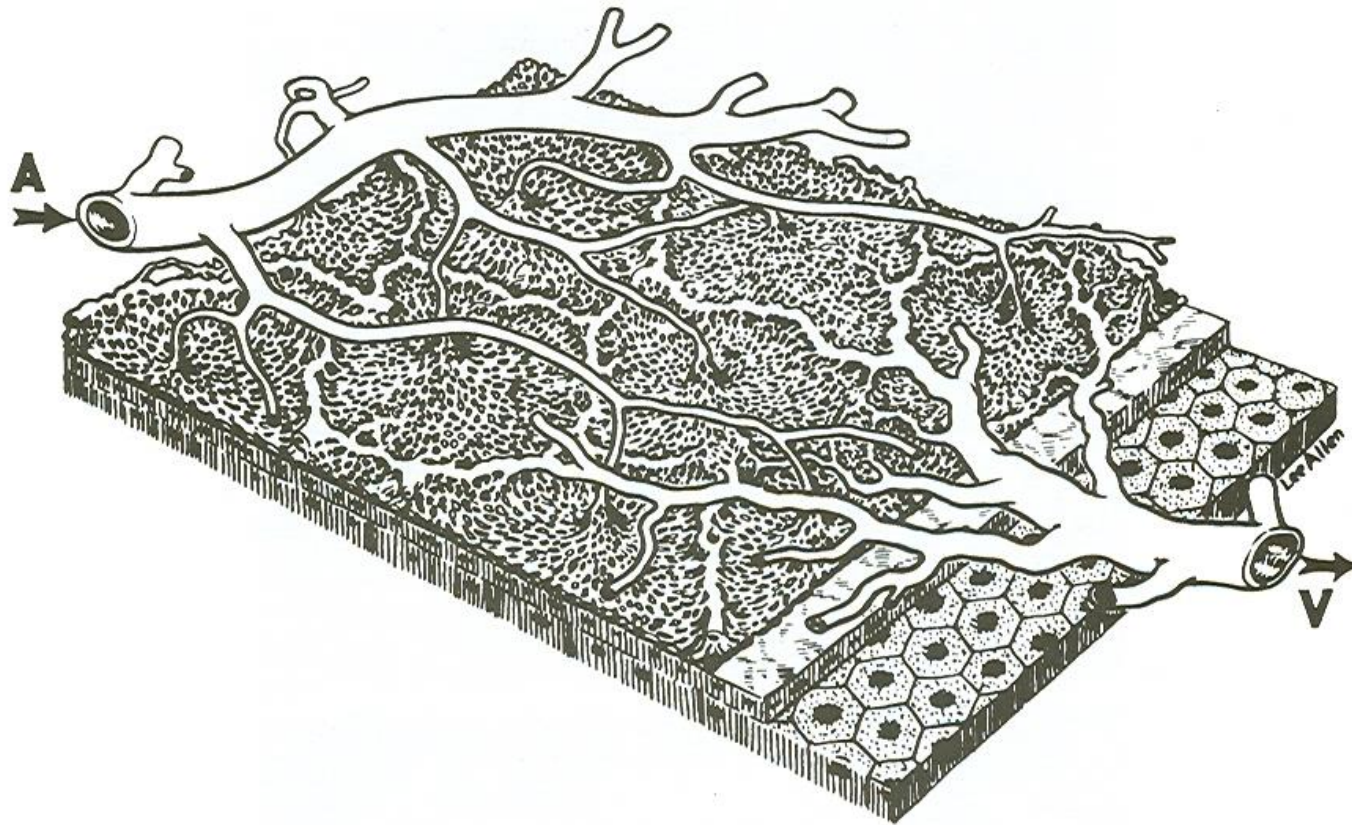
5. ENDOTELIO



ÚVEA ANTERIOR

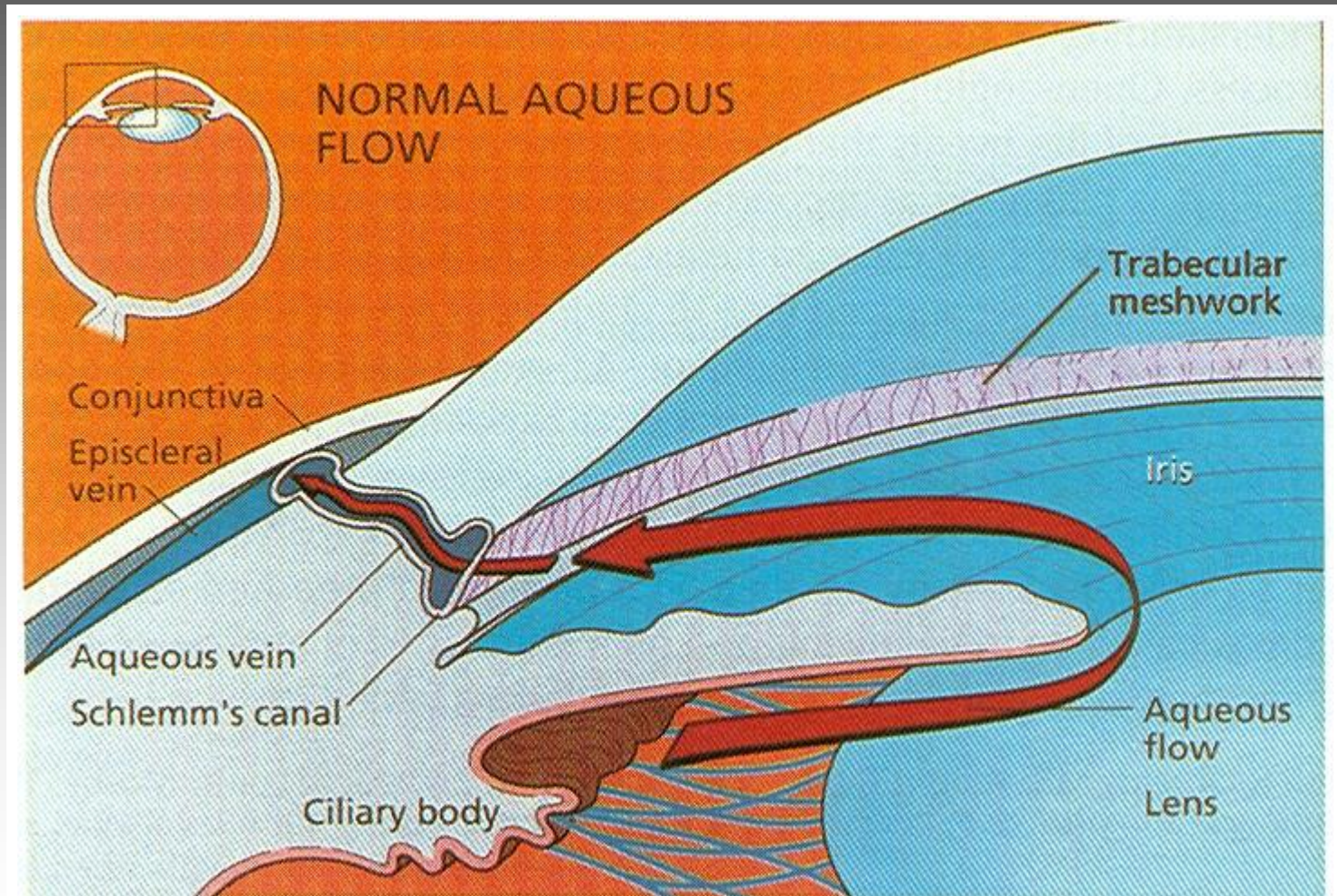


ÚVEA POSTERIOR

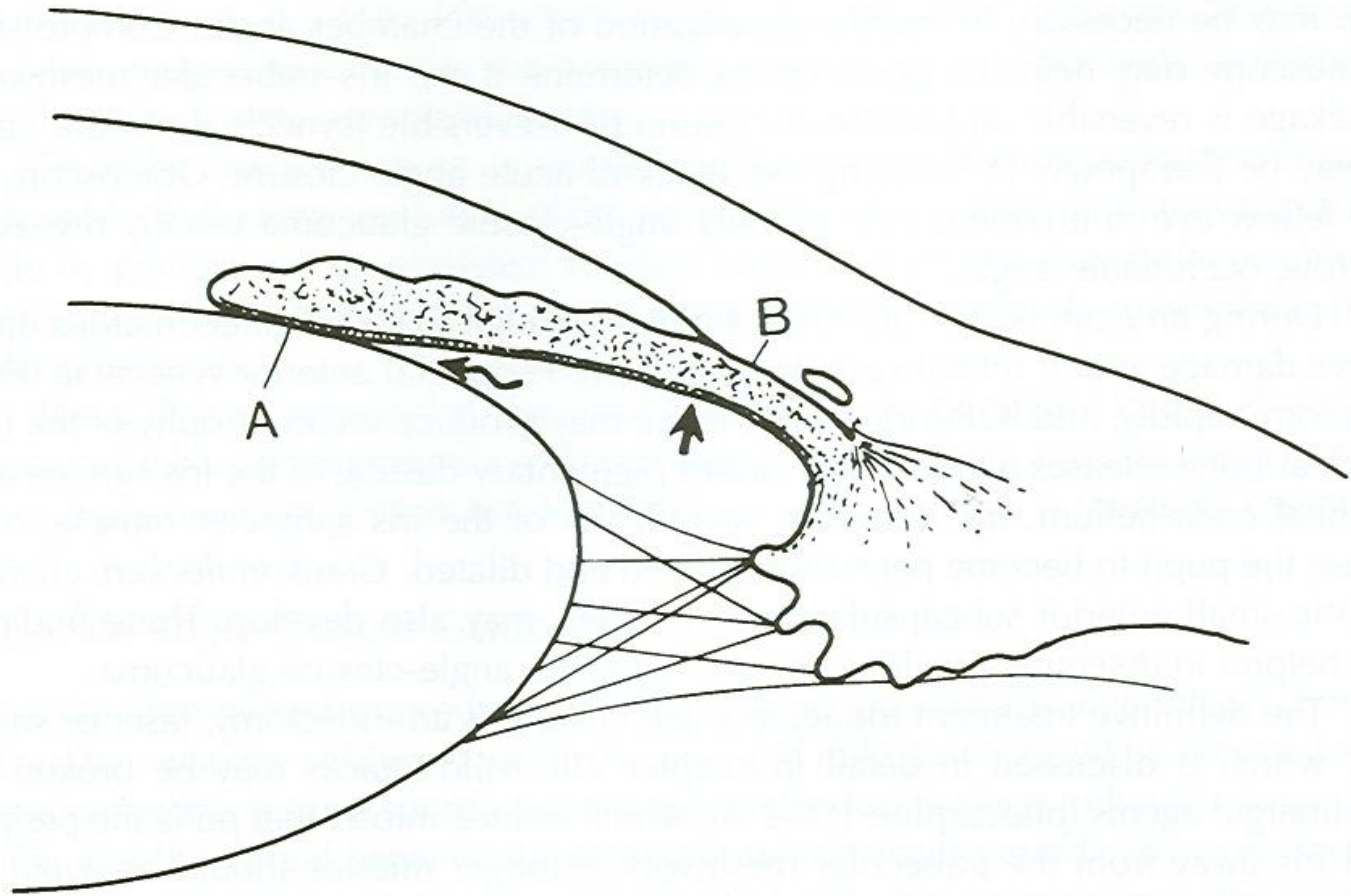


... that the ... pigment epithelium is

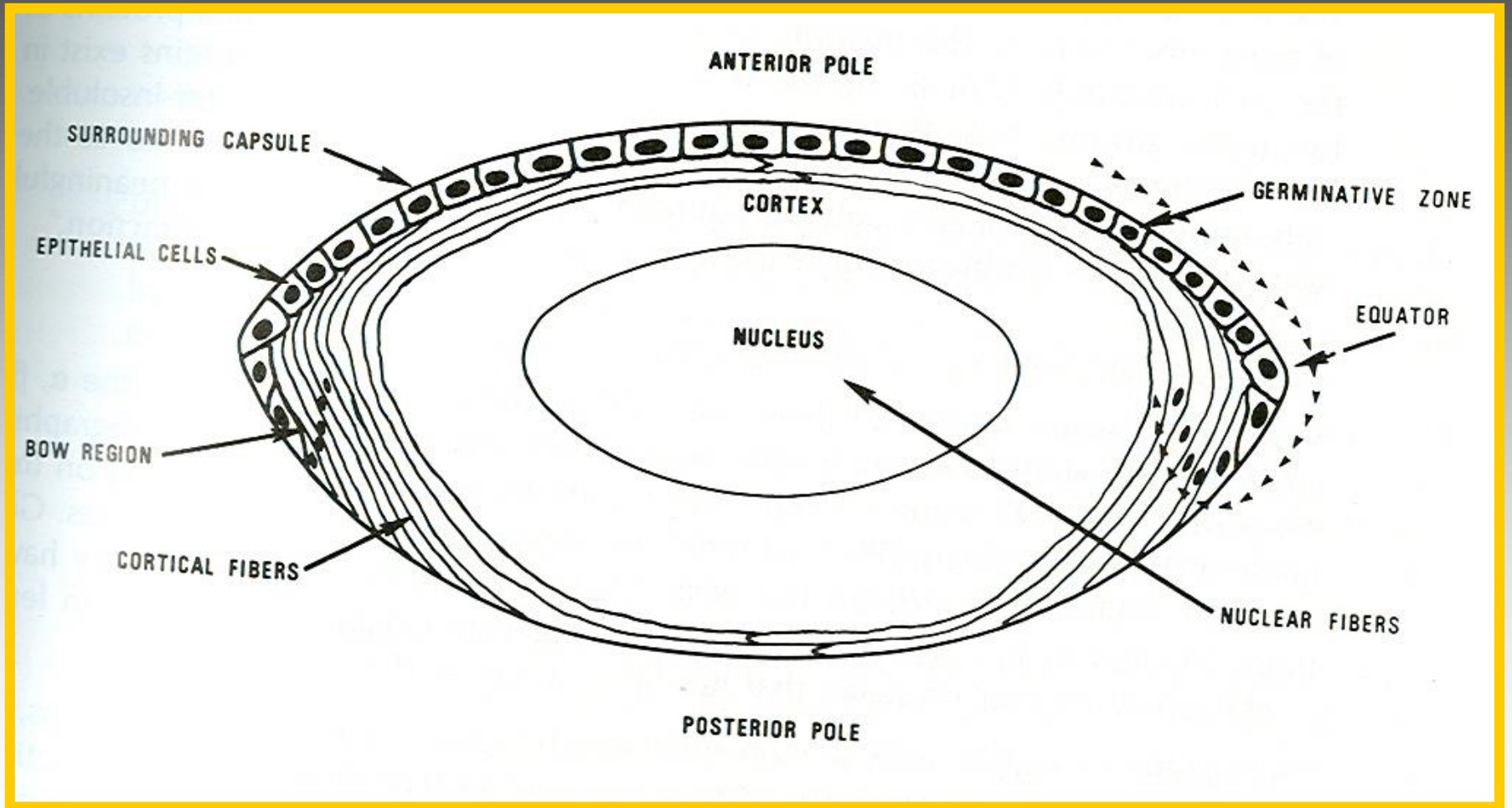
ÁNGULO IRIDO-CORNEAL Y CIRCULACIÓN DEL HUMOR ACUOSO

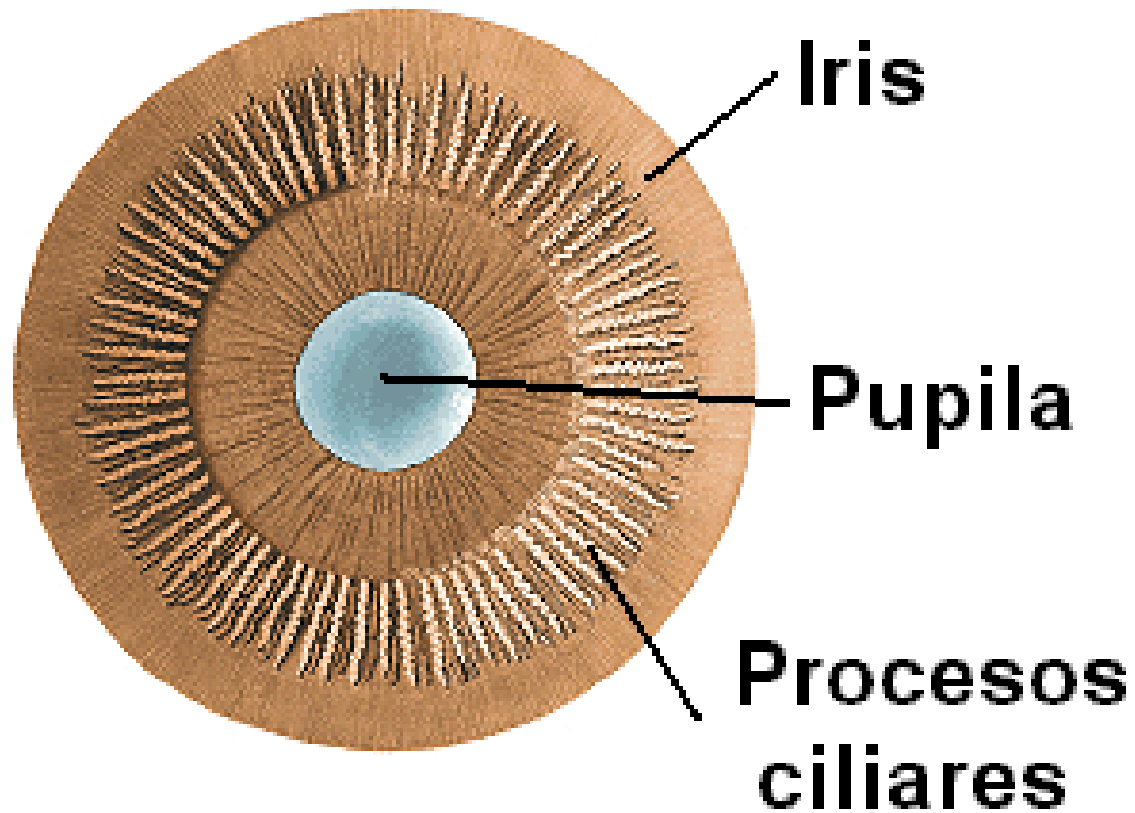


ÁNGULO Y PUPILA BLOQUEADOS POR EL IRIS



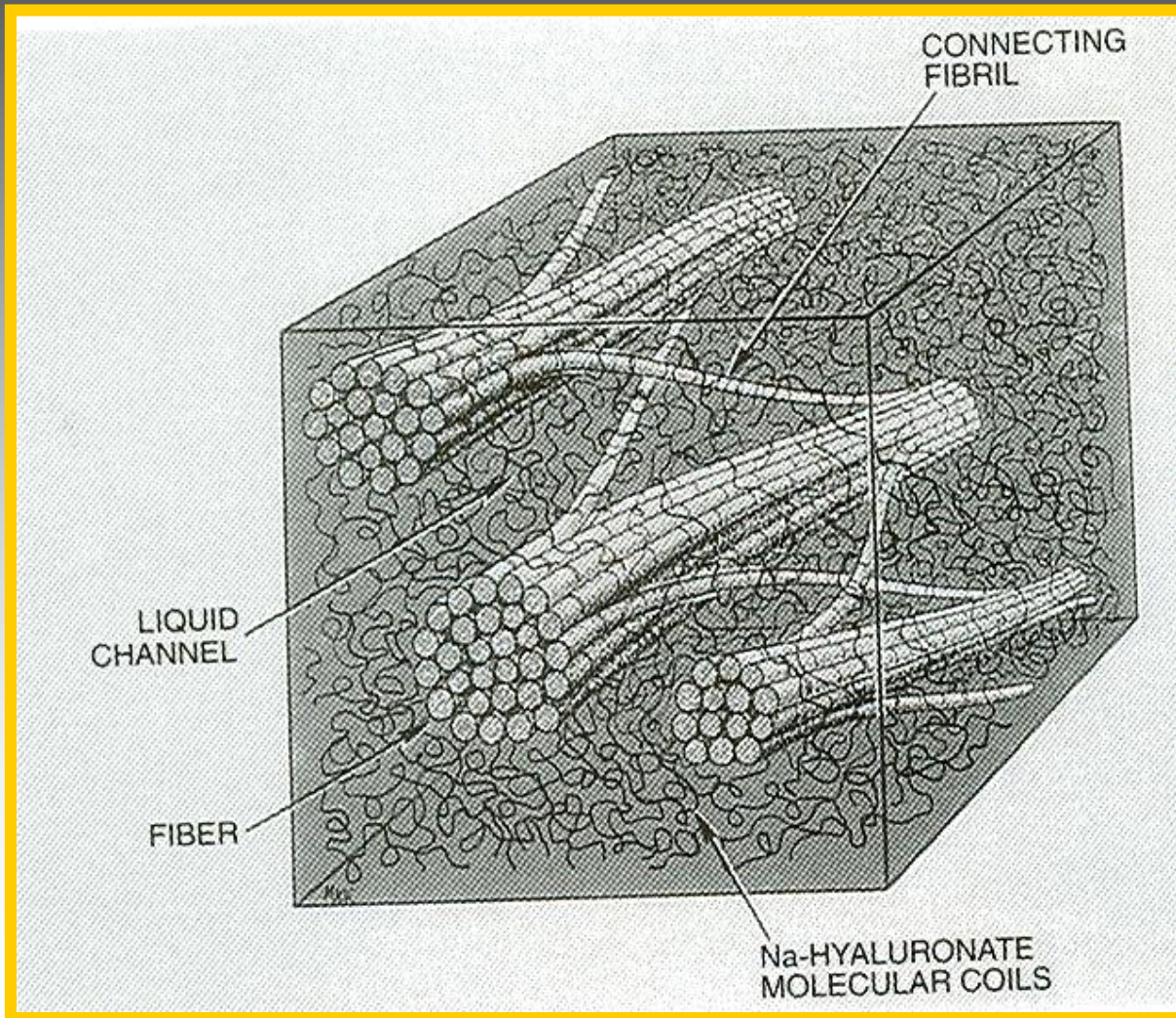
ANATOMÍA DEL CRISTALINO



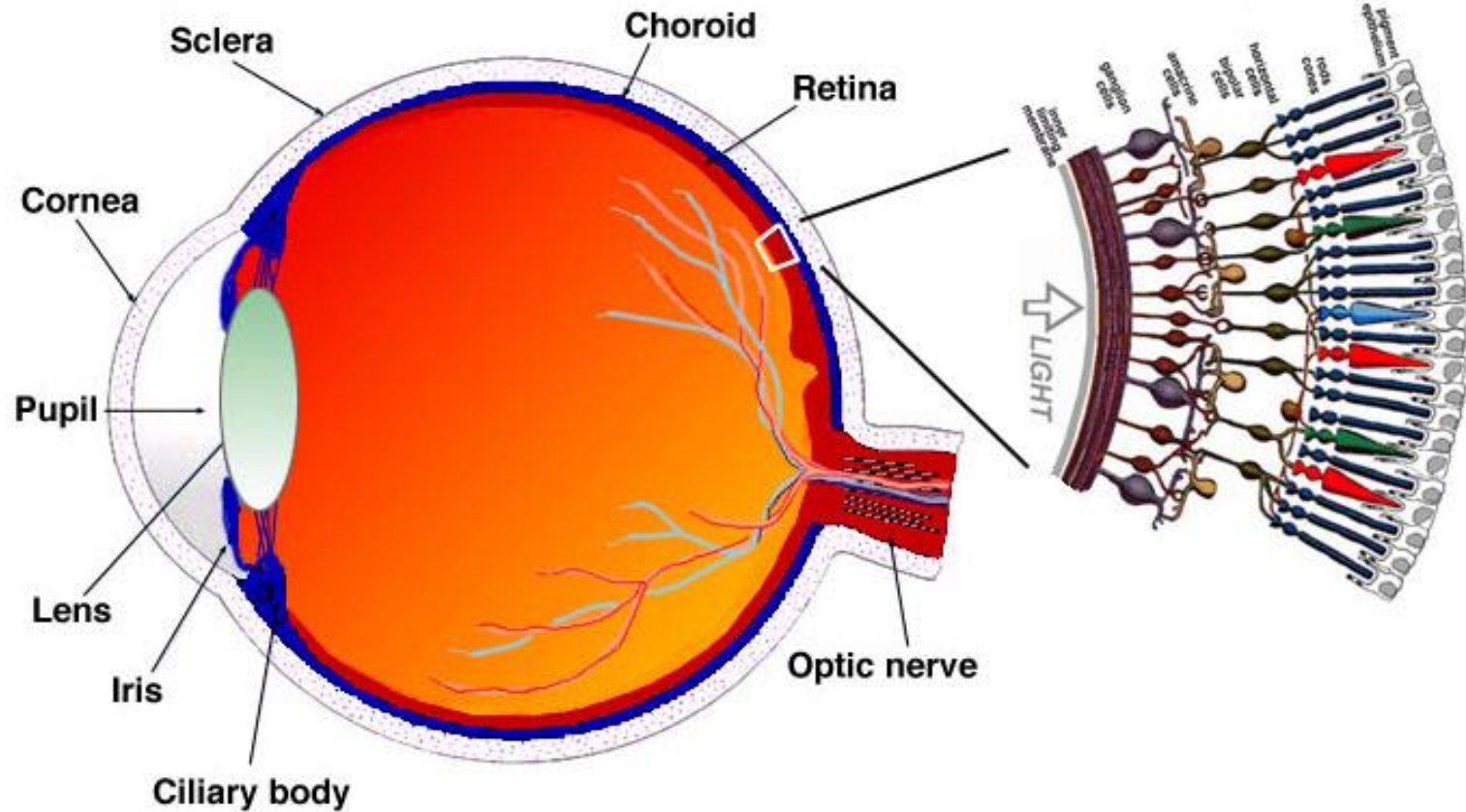


IRIS Y PUPILA

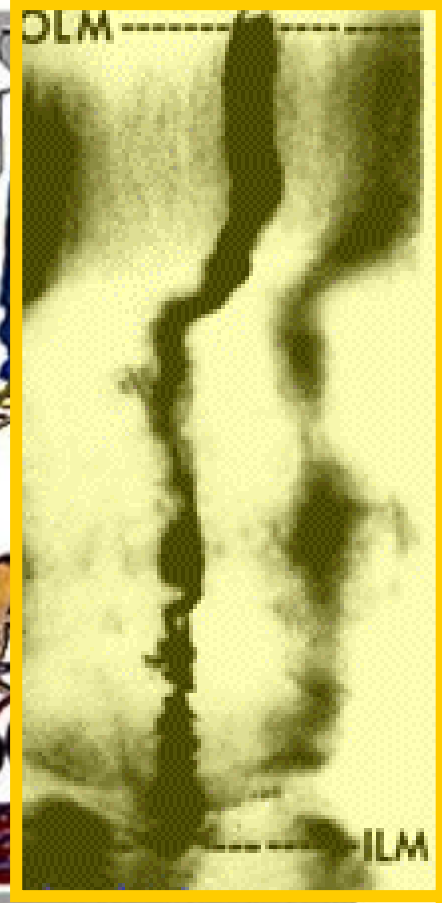
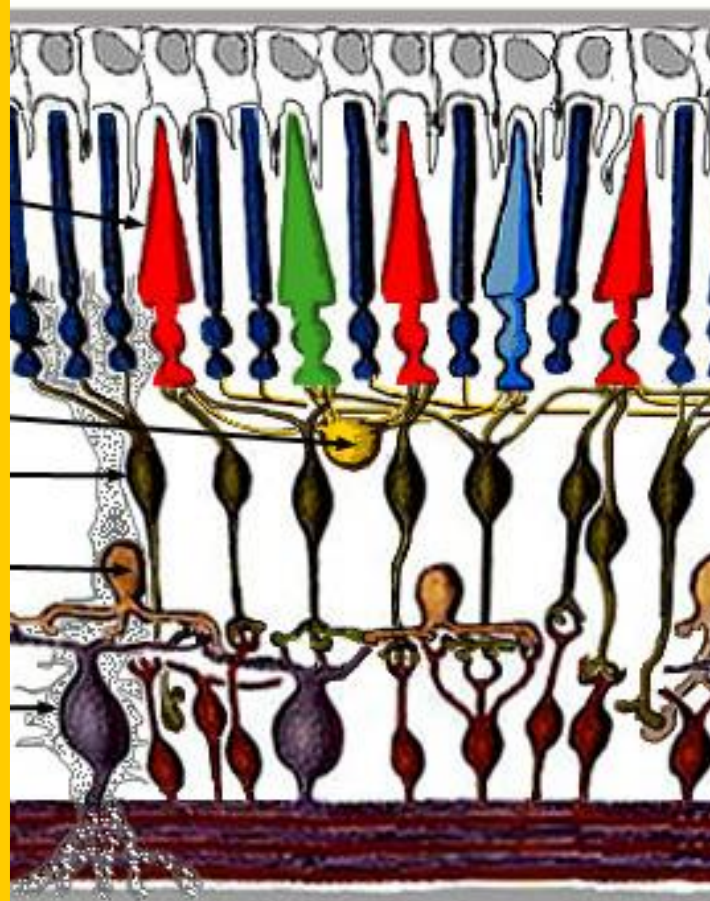
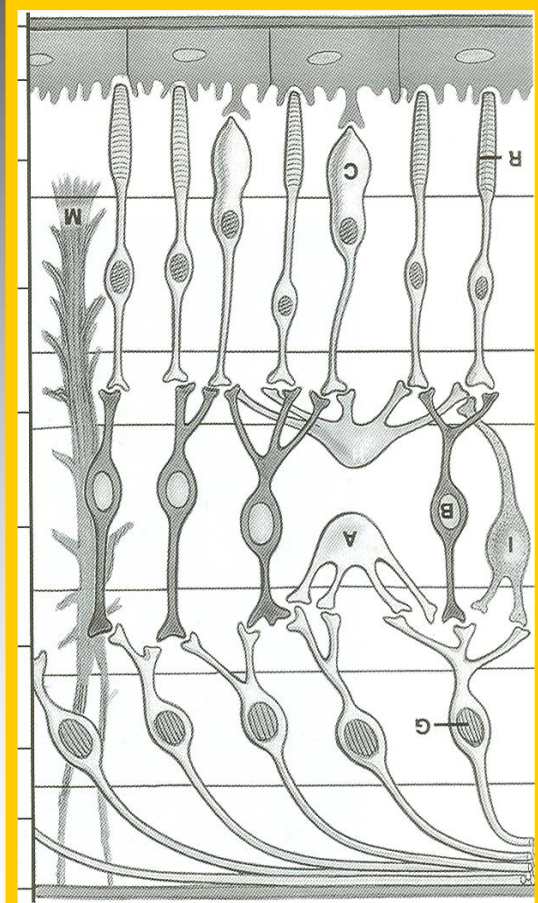
ANATOMÍA DEL CUERPO VÍTREO



GLOBO OCULAR SUS CAPAS Y ESTRUCTURAS INTERNAS

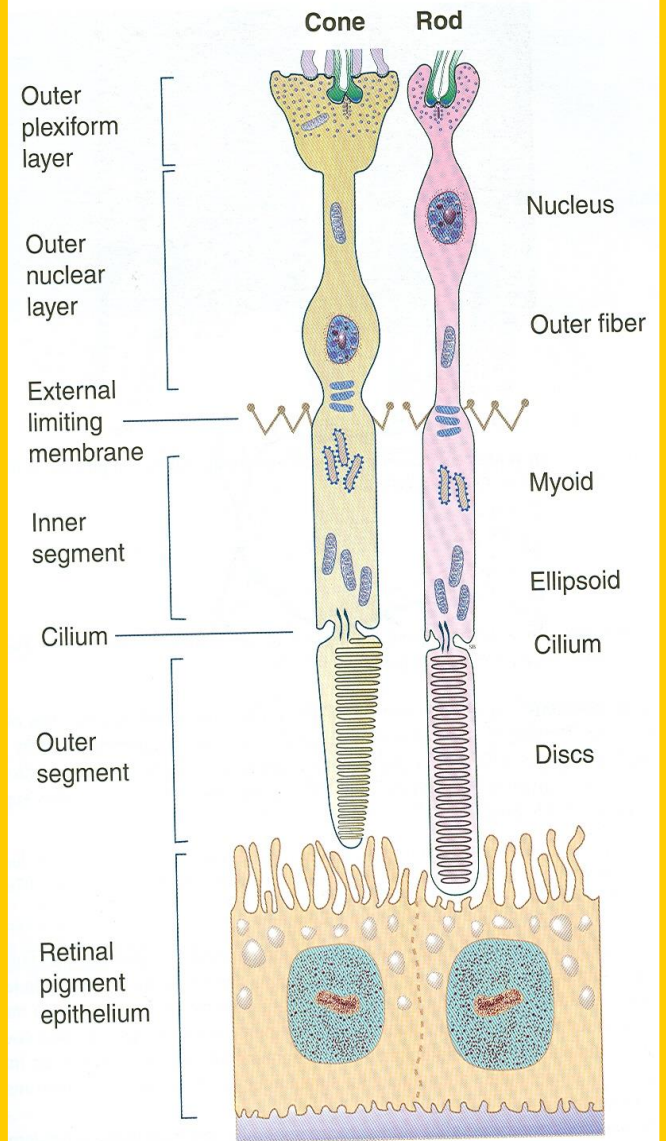


ESQUEMA DE LA RETINA

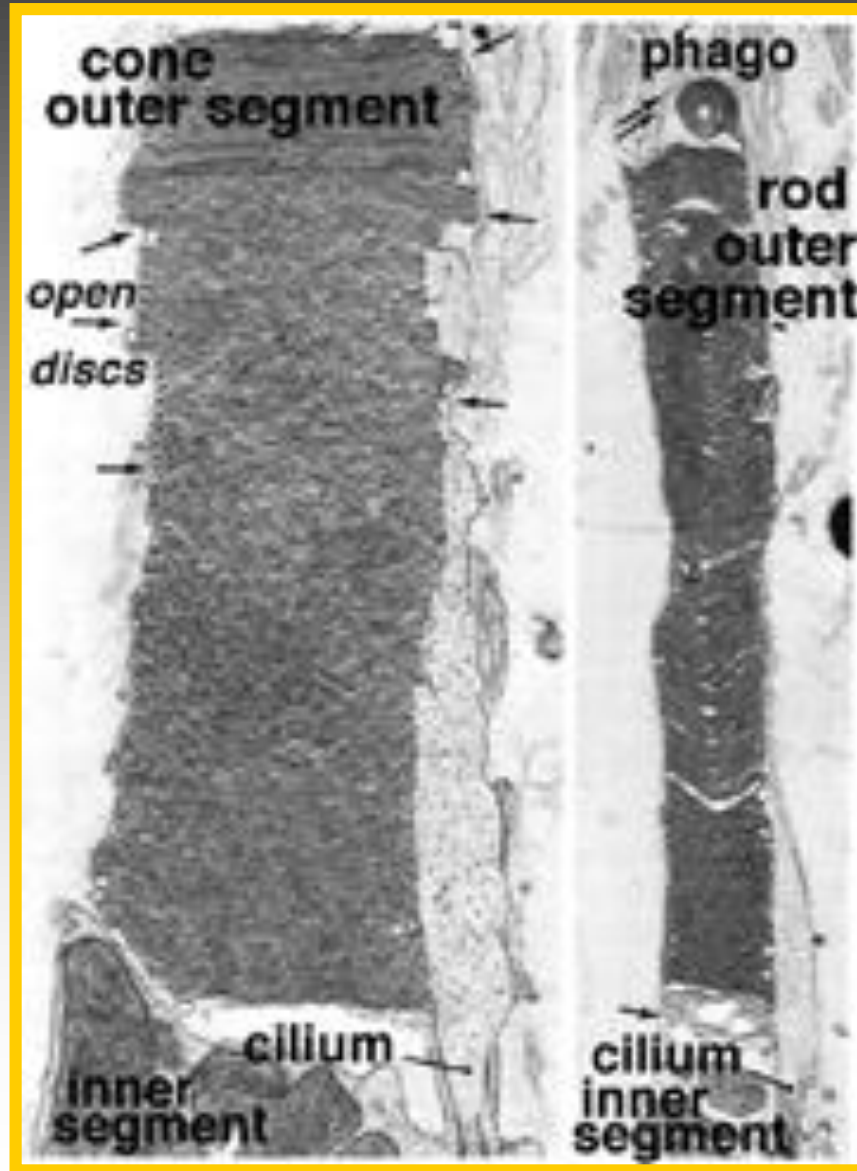


inner limiting membrane

FOTORRECEPTORES



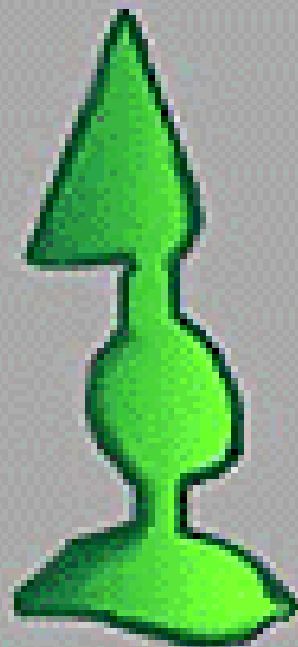
SEGMENTO EXTERNO CONOS Y BASTONES





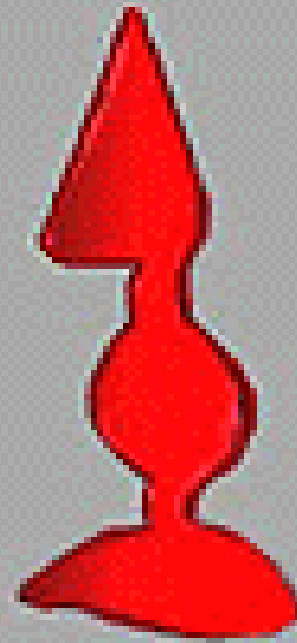
S-cone

420nm



M-cone

531nm

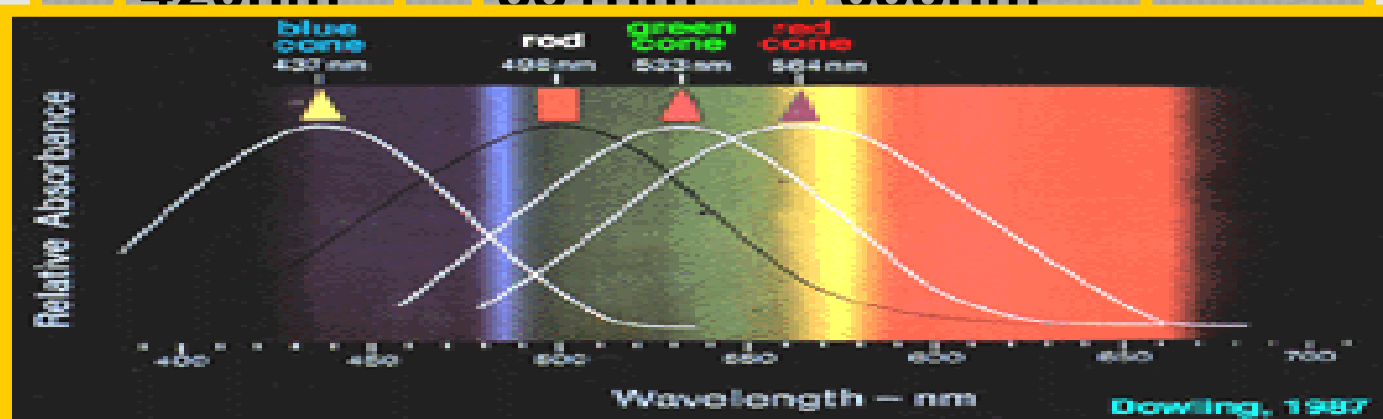


L-cone

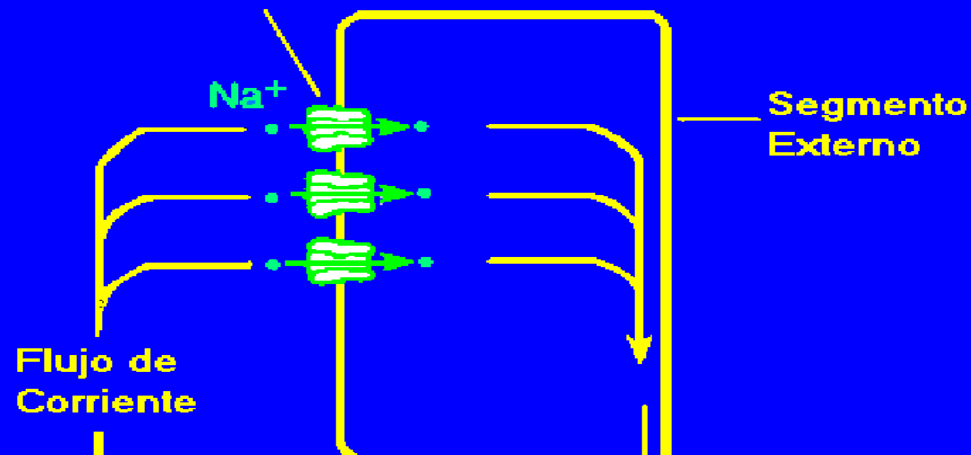
558nm



rod



Canales (cGMP) de compuertas



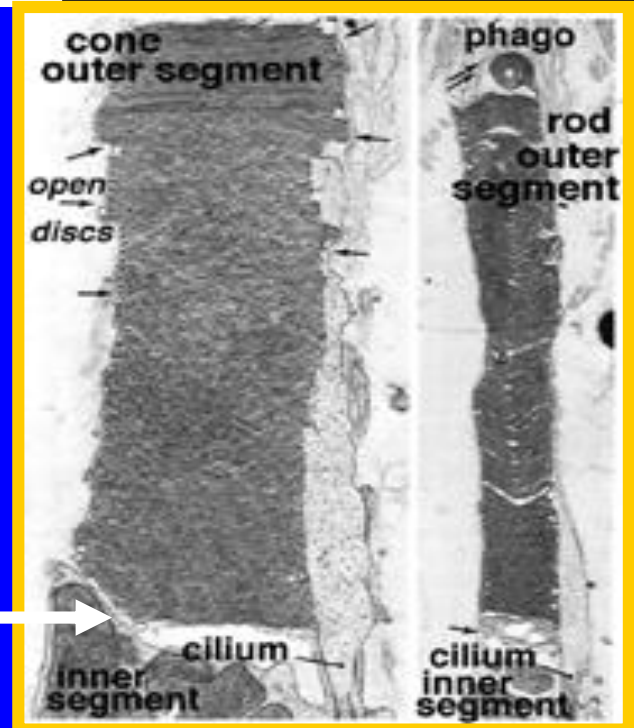
Segmento Externo

Cilium

Segmento Interno

Canales Selectivos de K^+

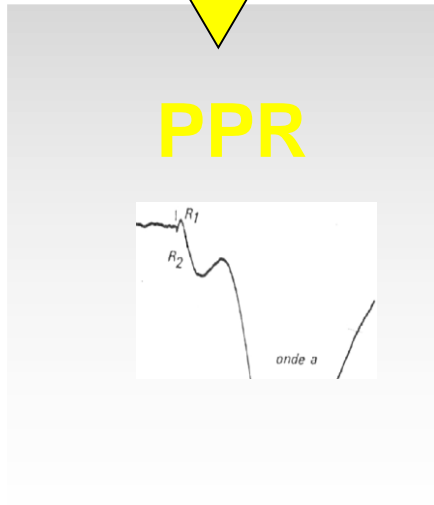
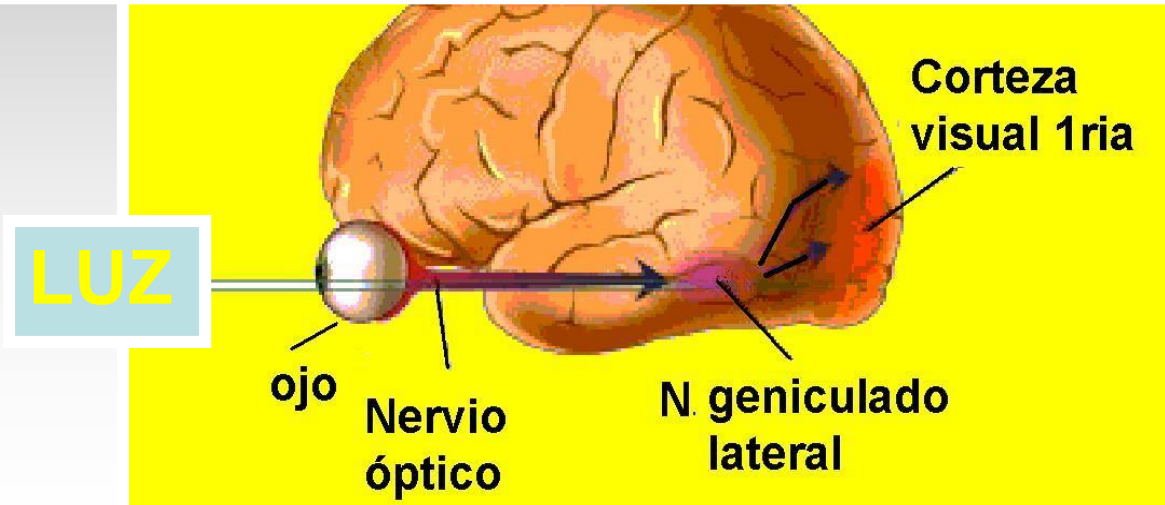
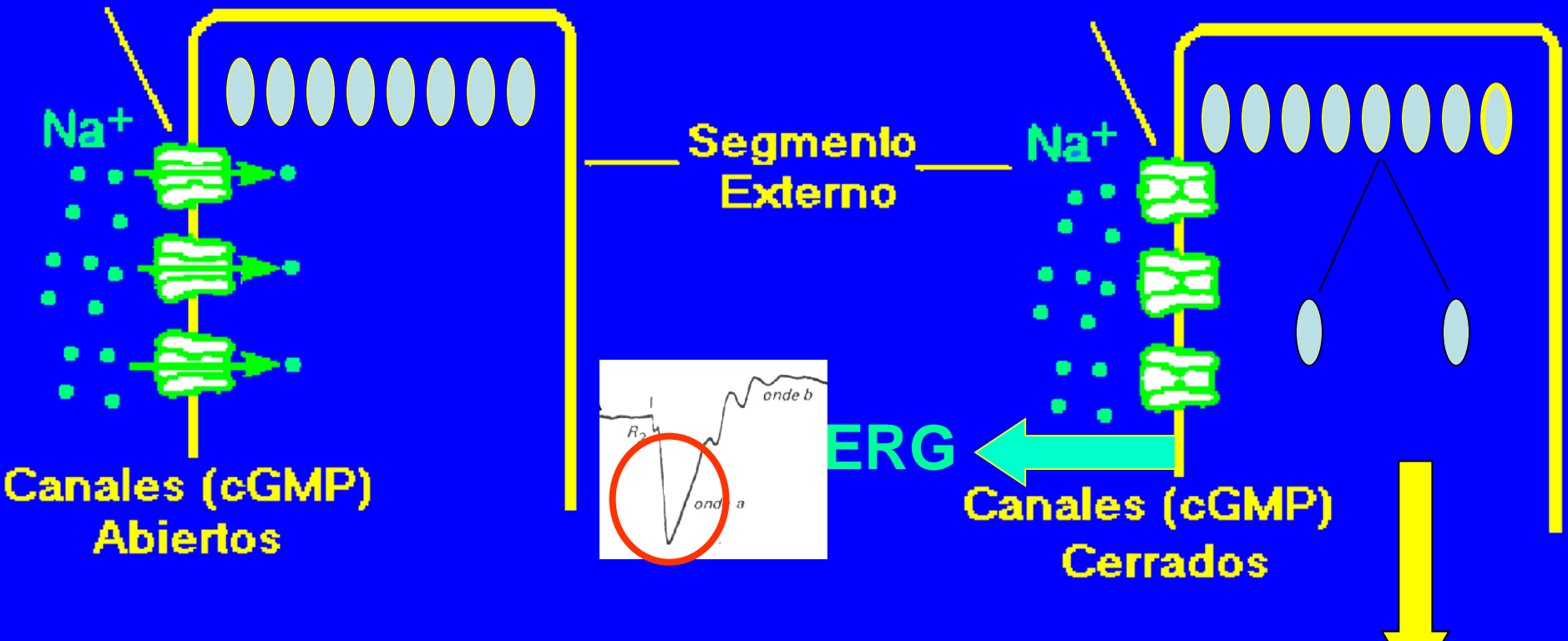
Transporte Activo



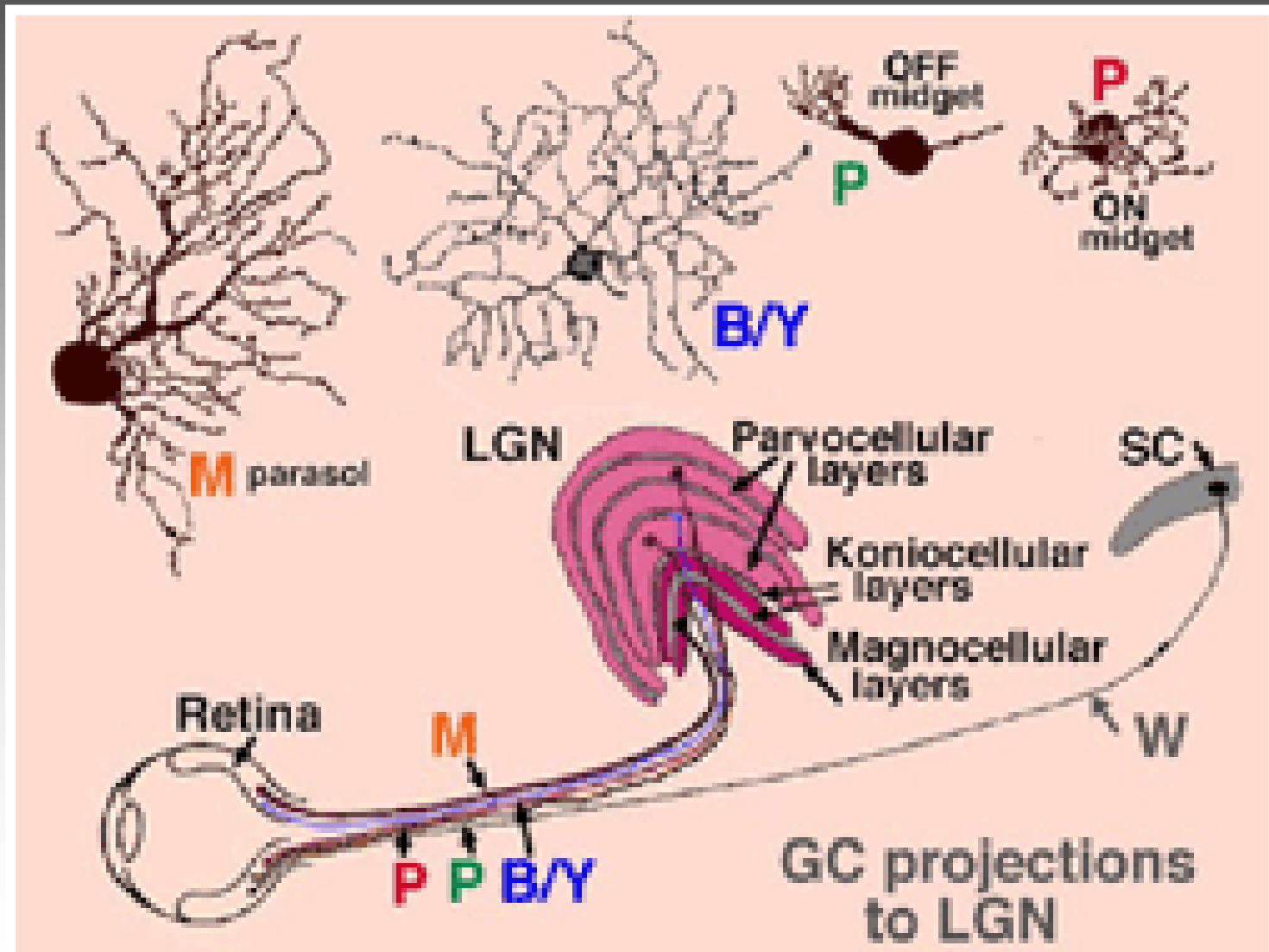
**FOTO
TRANS
DUCCIÓN**

Oscuridad

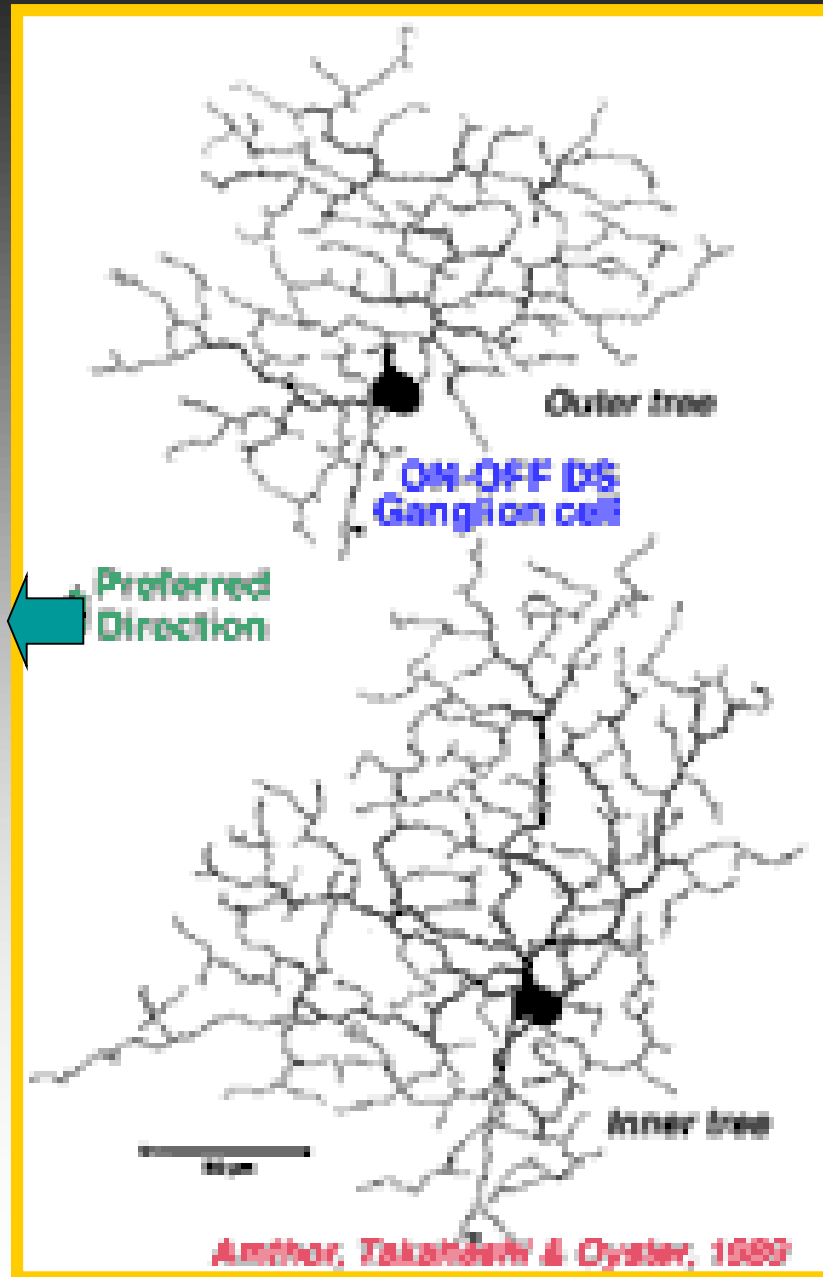
Luz



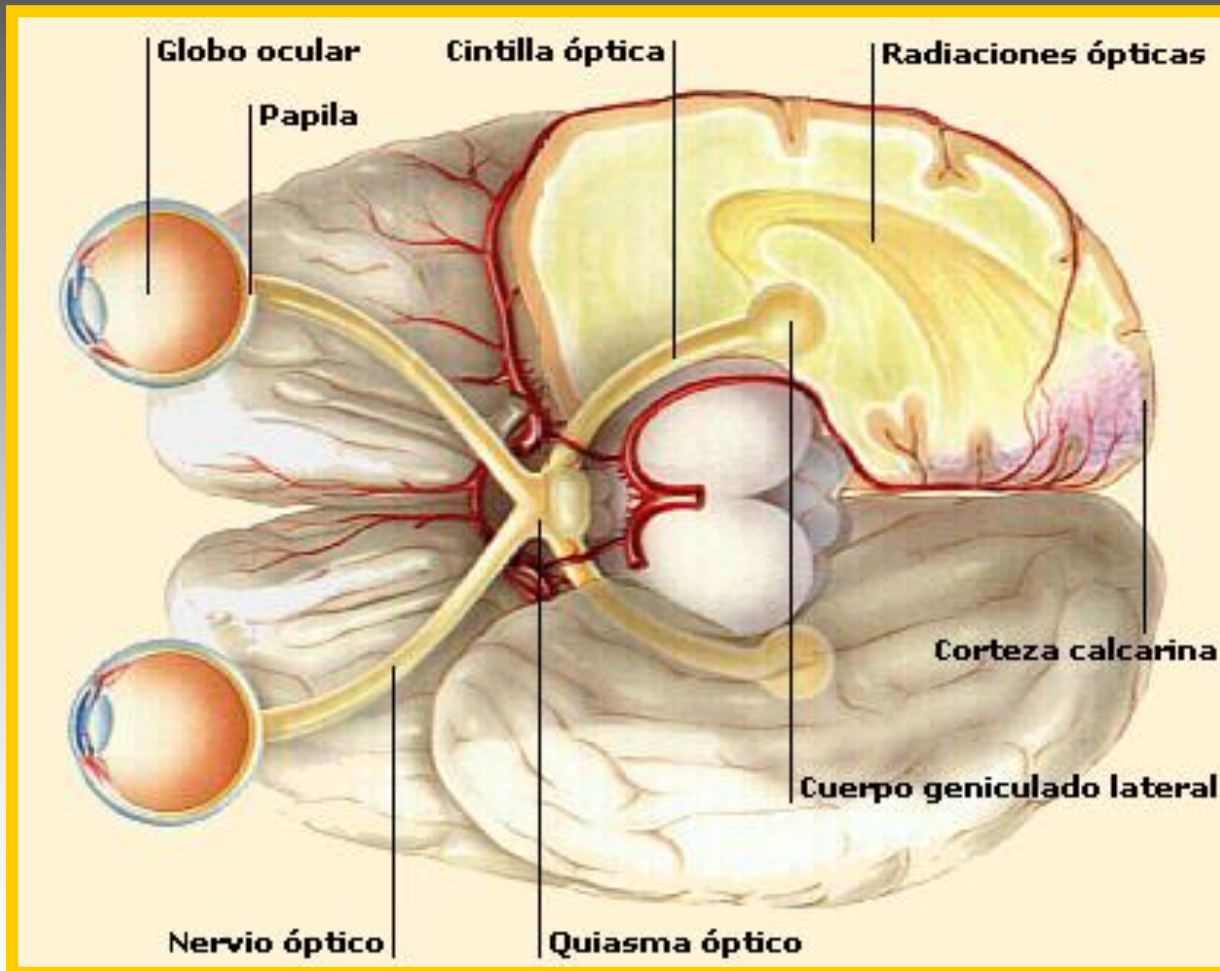
CÉLULAS GANGLIONARES Y SUS AXONES



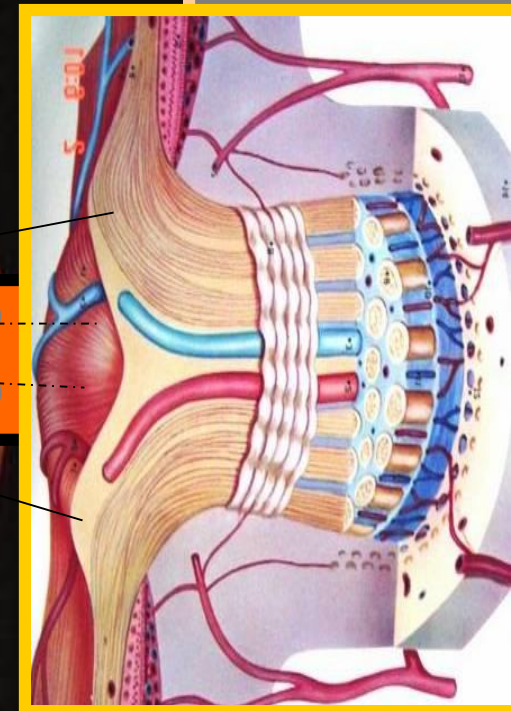
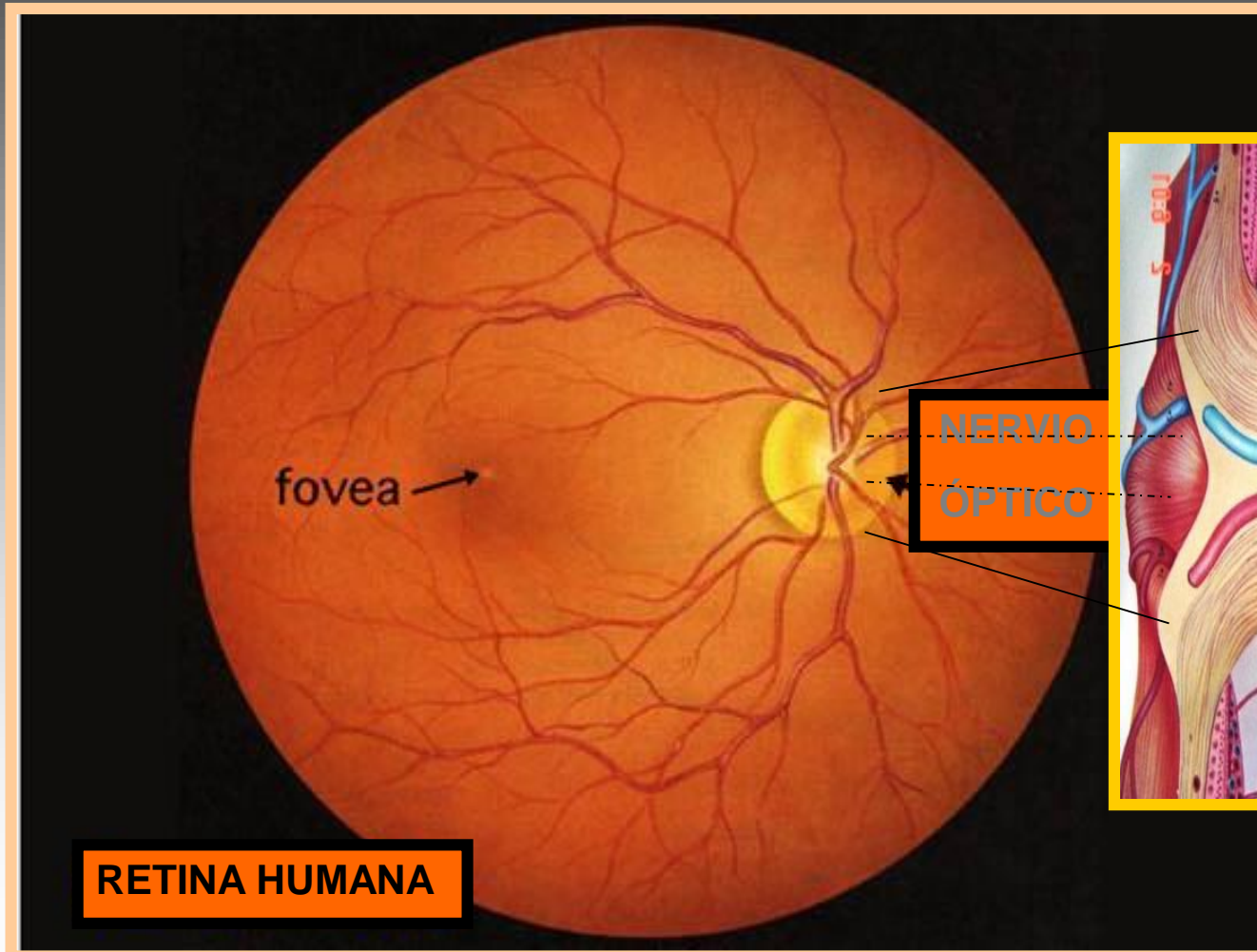
CÉLULAS GANGLIONARES

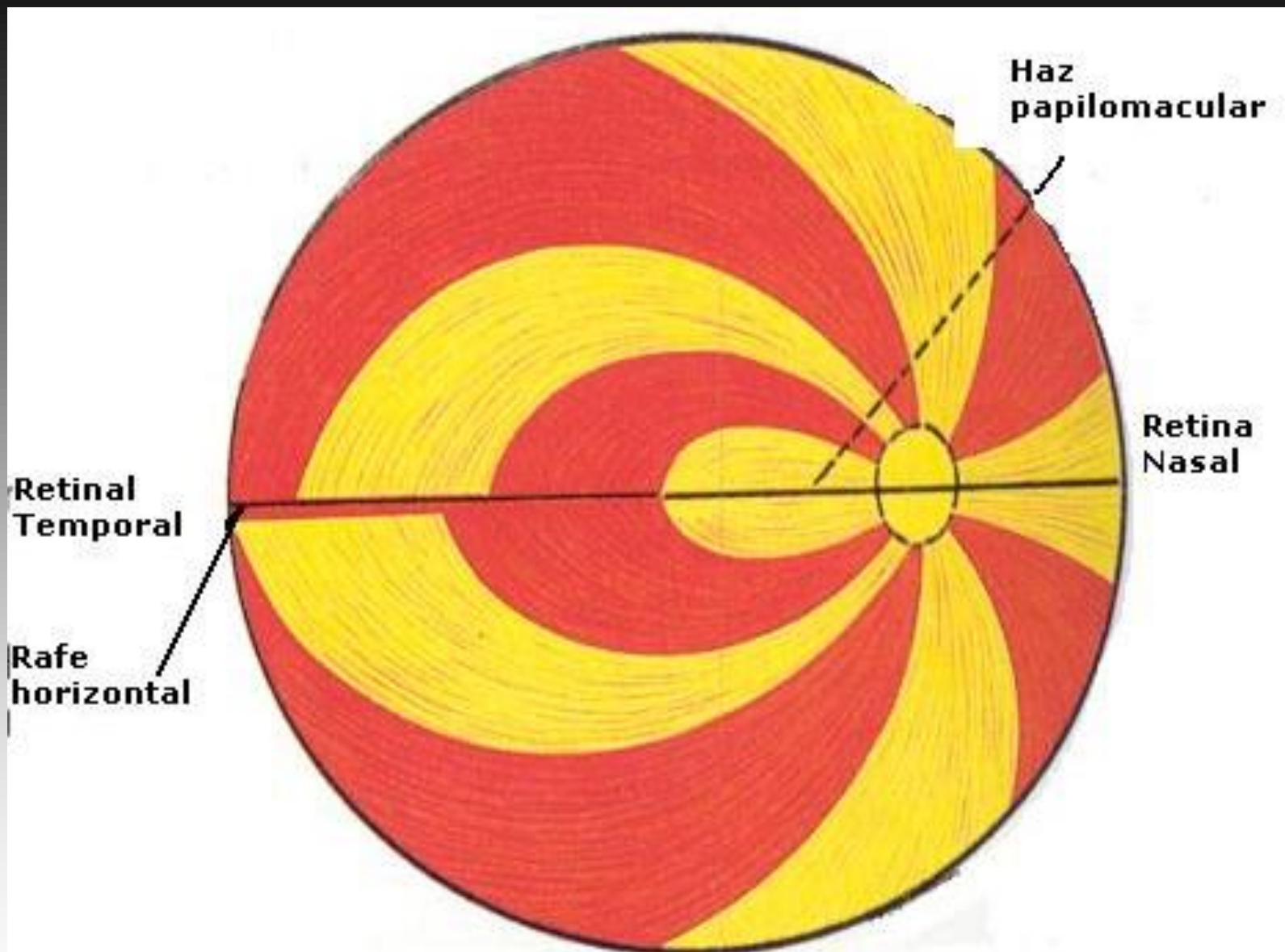


VÍA ÓPTICA



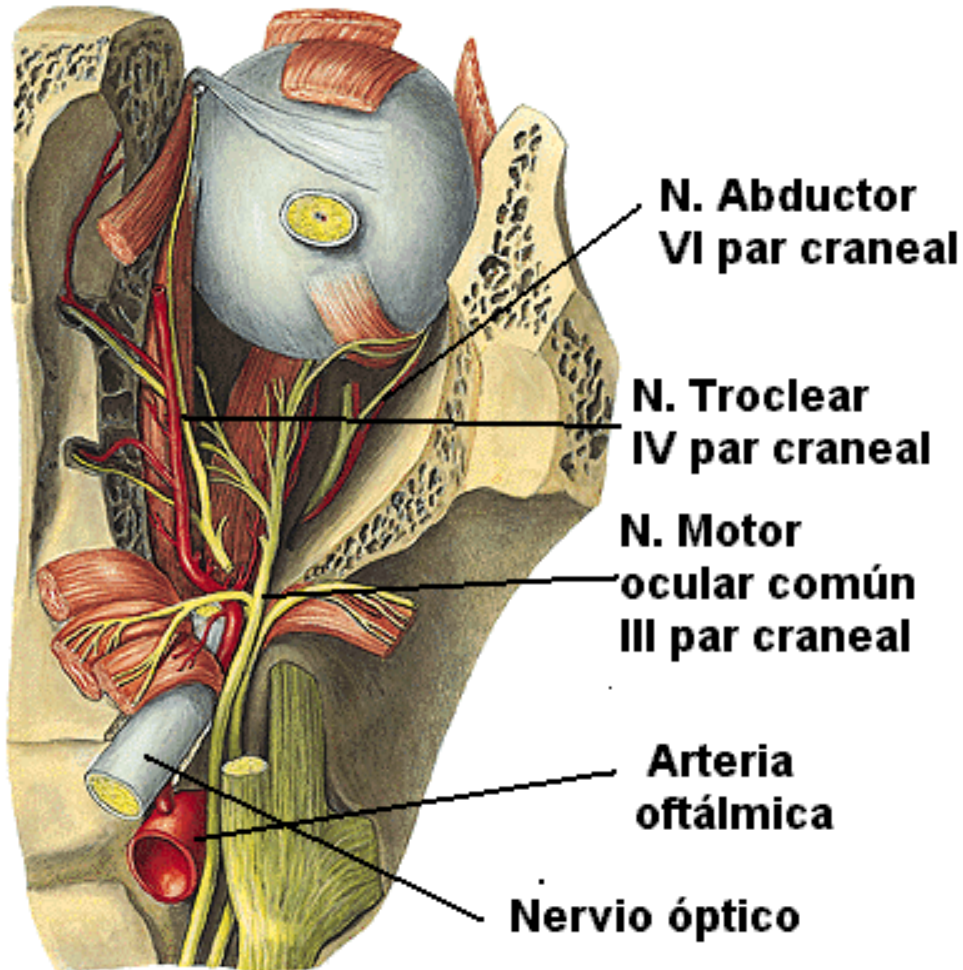
PORCIÓN INTRAOCULAR DEL NERVIO ÓPTICO





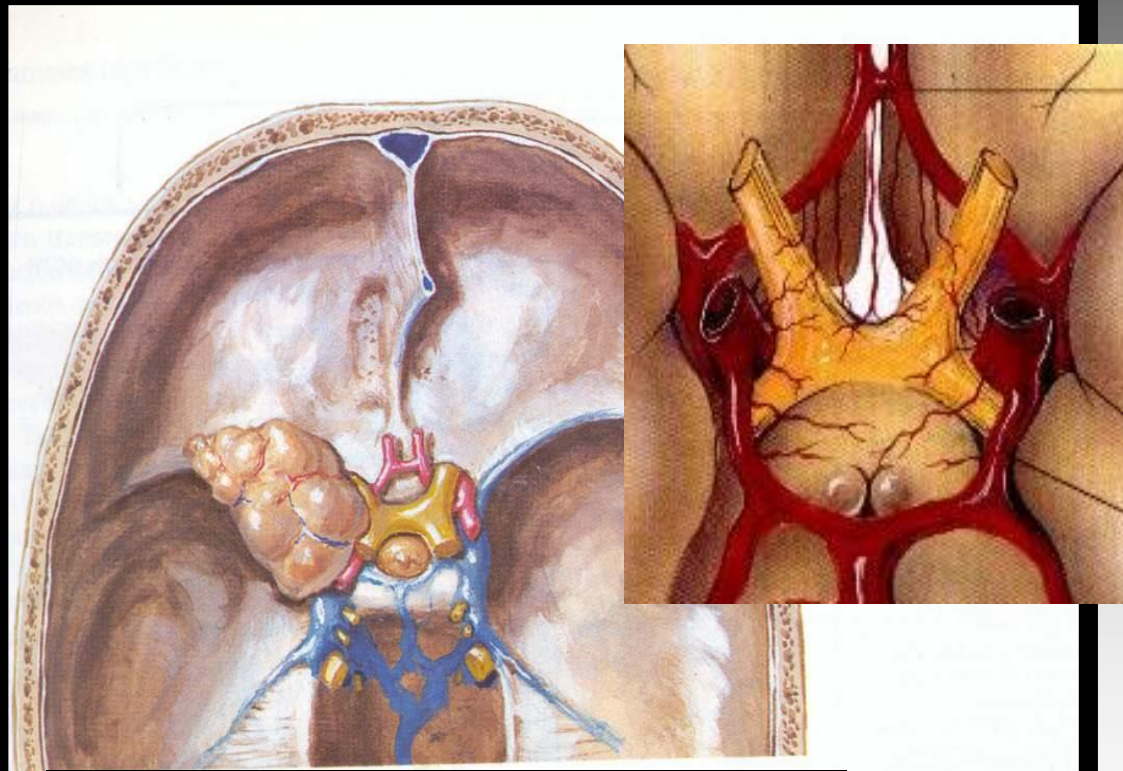
DISTRIBUCION DE LAS FIBRAS NERVIOSAS

NERVIO OPTICO



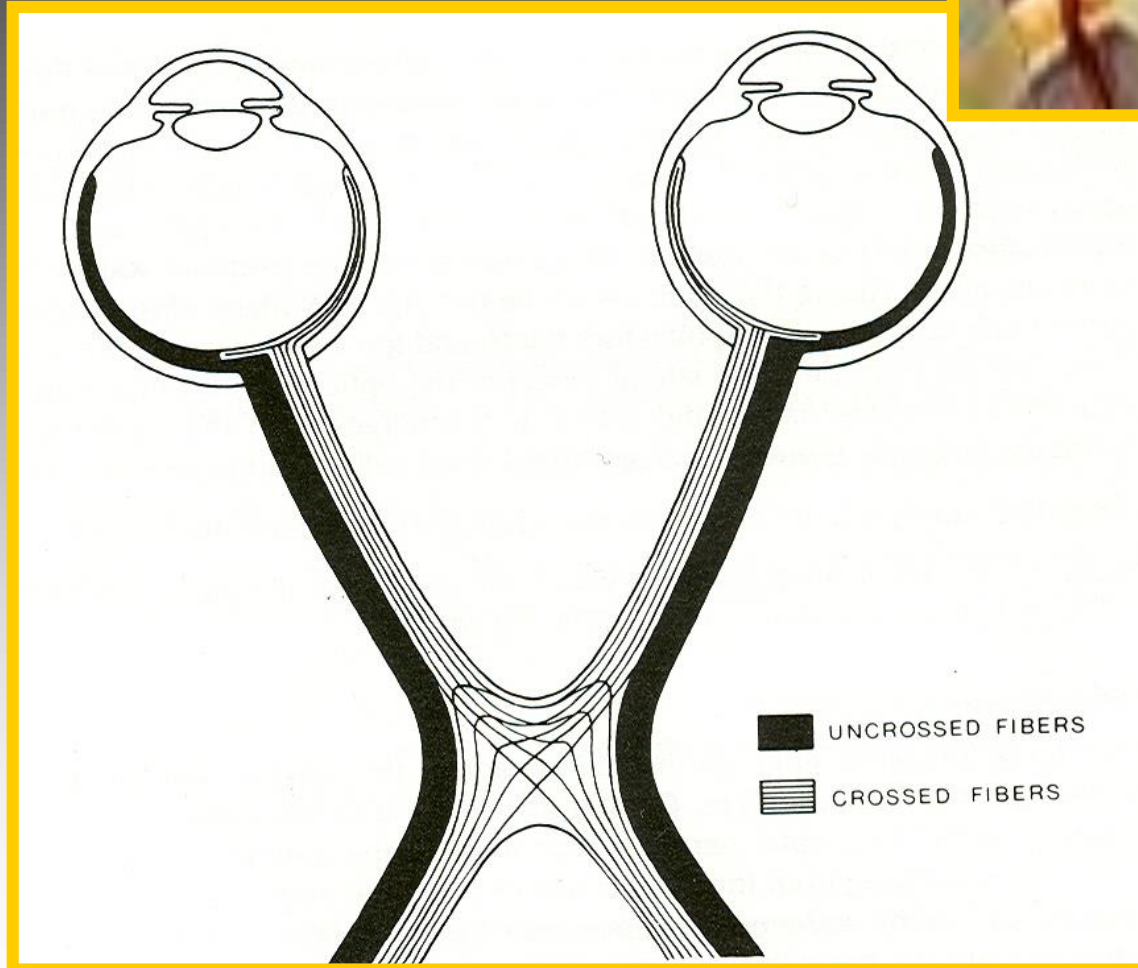
**RELACIONES ANATOMICAS DEL
NERVIO ÓPTICO**

PORCIÓN INTRACRANEAL

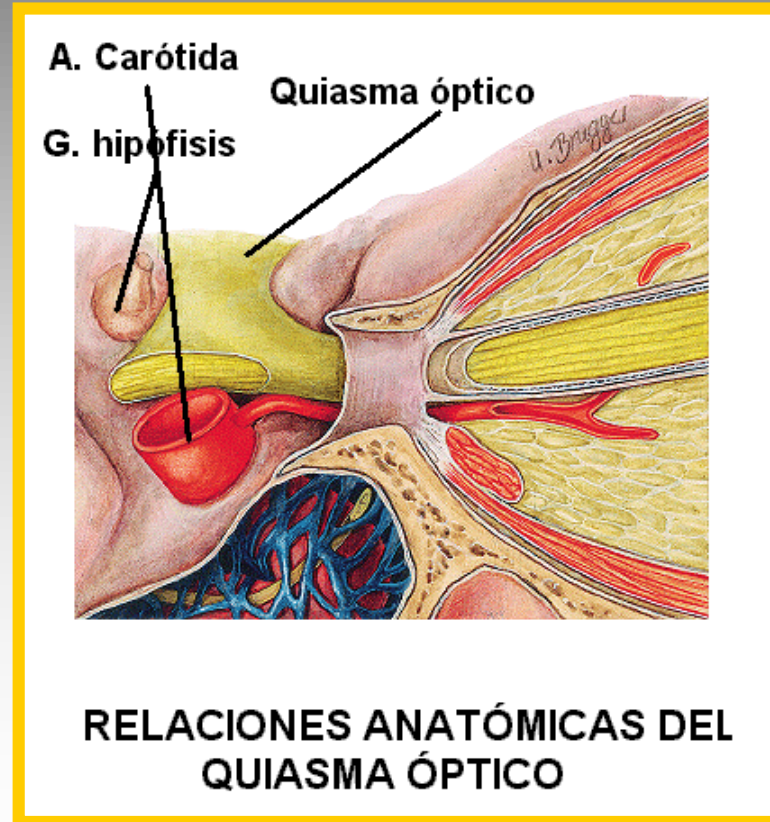
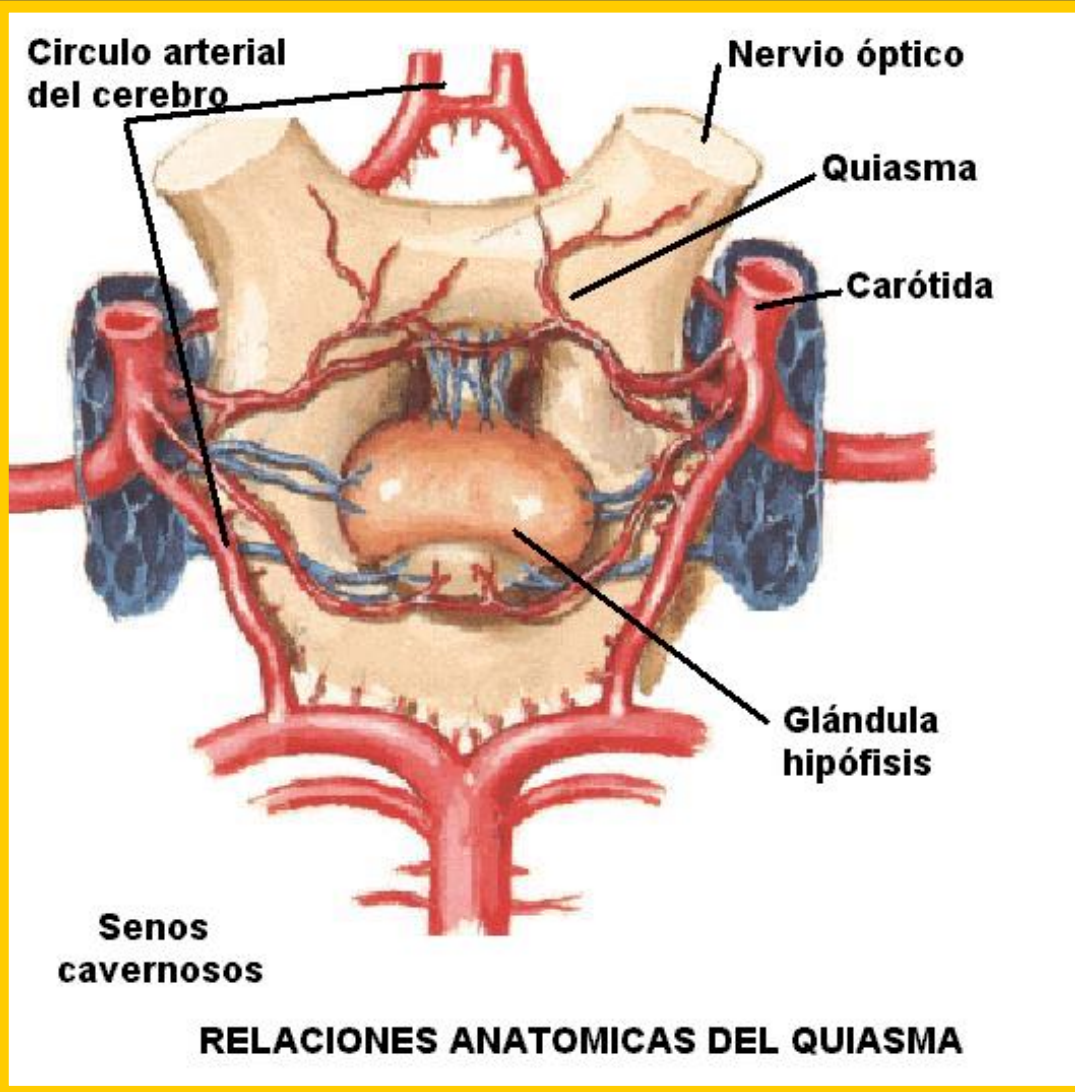


Meningioma del Esfenoides

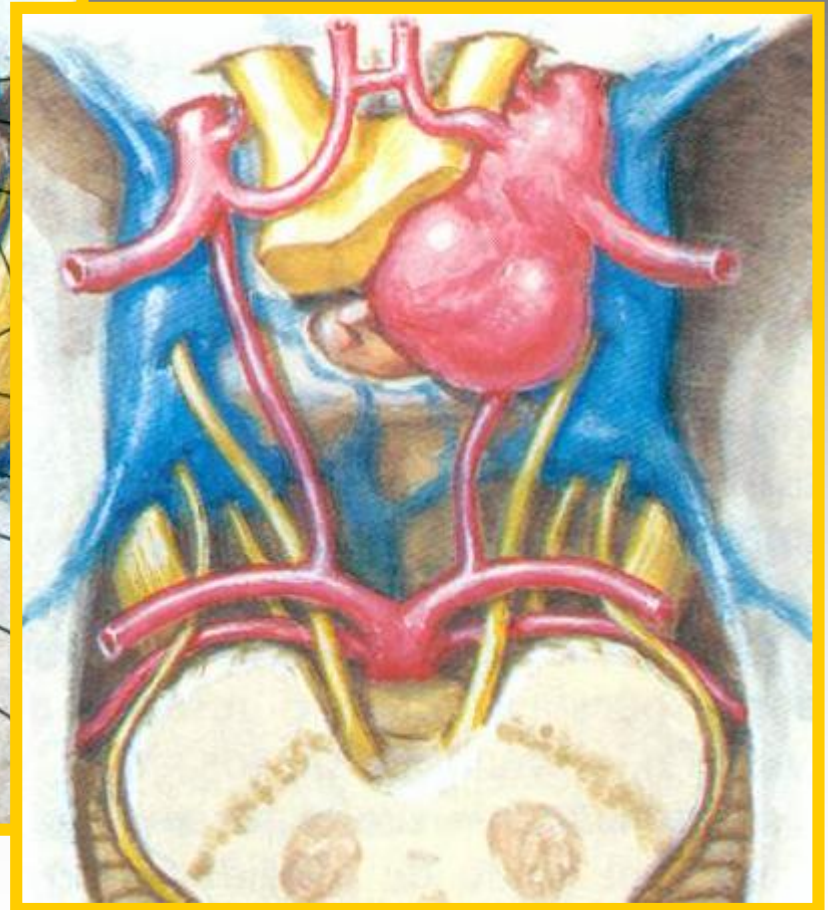
QUIASMA ÓPTICO



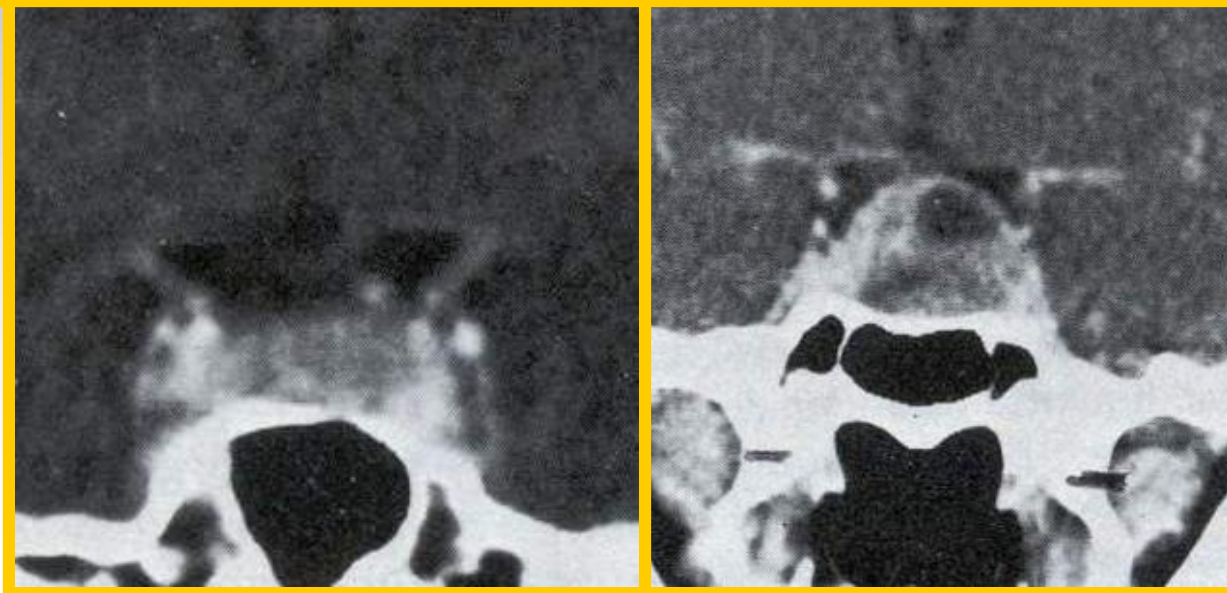
QUIASMA OPTICO



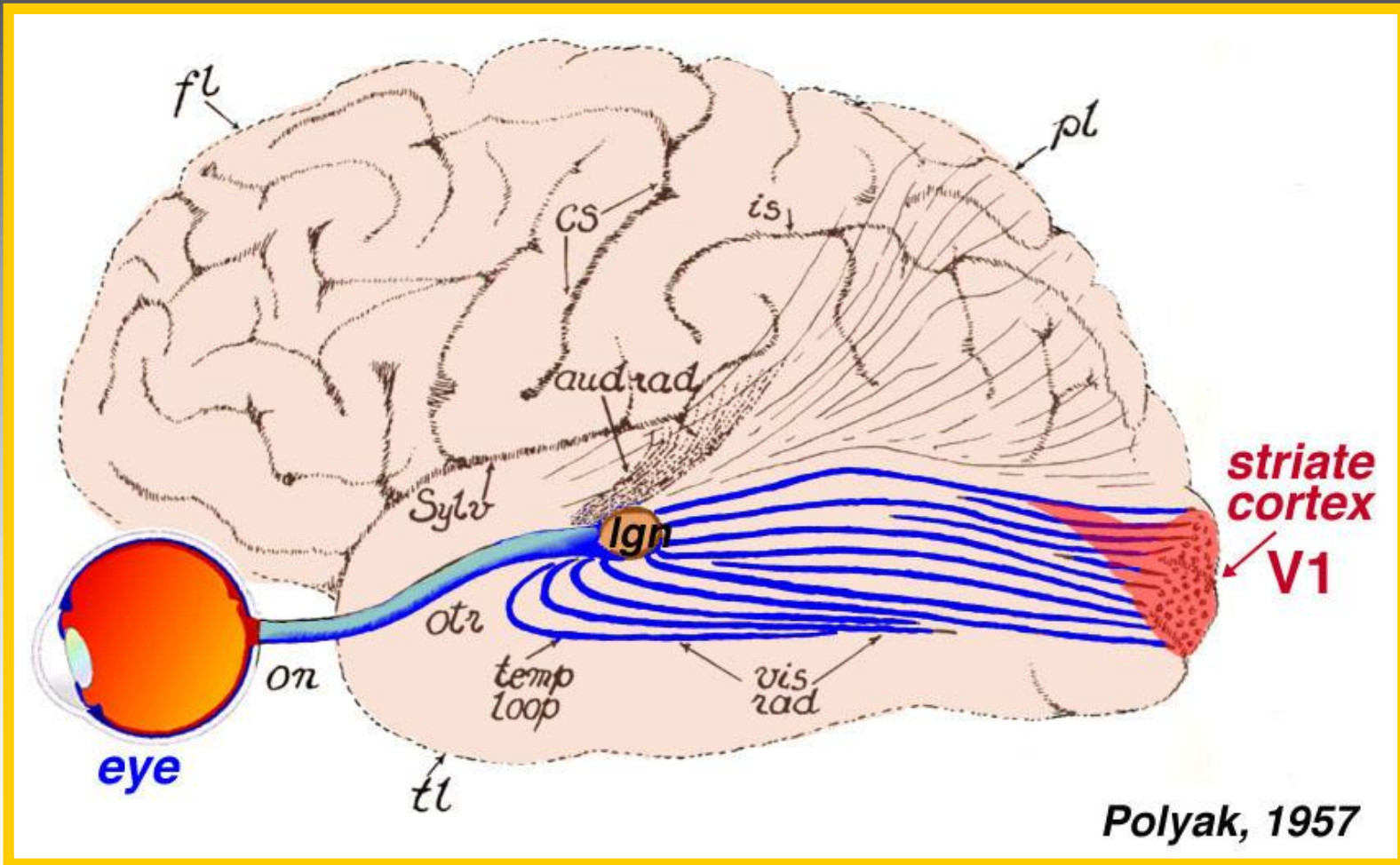
ANEURISMAS GIGANTES CONGÉNITOS



ADENOMAS DE HIPOFISIS



CORTEZA Y VÍA ÓPTICA



VISTA POSTERIOR DE LA CORTEZA

